

CBCS SCHEME



USN

--	--	--	--	--	--	--	--	--	--

21ARC63

Sixth Semester B.Arch. Degree Examination, June/July 2026 Landscape Architecture

Time: 3 hrs.

Max. Marks: 100

*Note: 1. Answer any FIVE full questions, choosing ONE full question from each module.
2. Missing data, if any, may be suitably assumed.*

Module-1

1 Define Landscape Architecture. Describe the role of a landscape architect in today's context. (20 Marks)

OR

2 Write short note on the following :

a. Natural and Man-made landscapes (10 Marks)

b. Concept of ecology, biodiversity and sustainability. (10 Marks)

Module-2

3 Discuss the process of site analysis through an example, mentioning the various layers and its response for architectural and landscape intervention. (20 Marks)

OR

4 a. Define Grading. Explain how it helps in design process through sketches. (10 Marks)

b. Discuss the relation between built and unbuilt space with one example. (10 Marks)

Module-3

5 a. Explain how landform helps in articulating outdoor spatial design. (10 Marks)

b. Illustrate the role of water in landscape design. (10 Marks)

OR

6 Write short notes on the following with relevant sketches :

a. Paving (05 Marks)

b. Landscape Walls (05 Marks)

c. Lighting (05 Marks)

d. Trellis (05 Marks)

Module-4

7 Explain the design philosophies of Eastern landscape architecture with an example for each. Draw relevant sketches. (20 Marks)

OR

8 Taking an example, explain the design approach for the following landscape architects:

a. Turenscape (10 Marks)

b. Ravindra Bahn (10 Marks)

Module-5

- 9 Elaborate on how the following spaces help in enhancing an educational campus by creating socializing and interactive spaces:
- OAT (10 Marks)
 - Plazas and Courtyards (10 Marks)

OR

- 10 Develop a landscape design for a courtyard of size 5 m × 5 m, which is inside a cafeteria. Draw the proposed plan to scale with detailed labeling. Present the following with neat sketches to illustrate your design. [Refer Fig.Q10]
- Concept through sketches
 - One section
 - One construction detail of any proposed landscape element
 - 2 plant typology with their common and scientific names

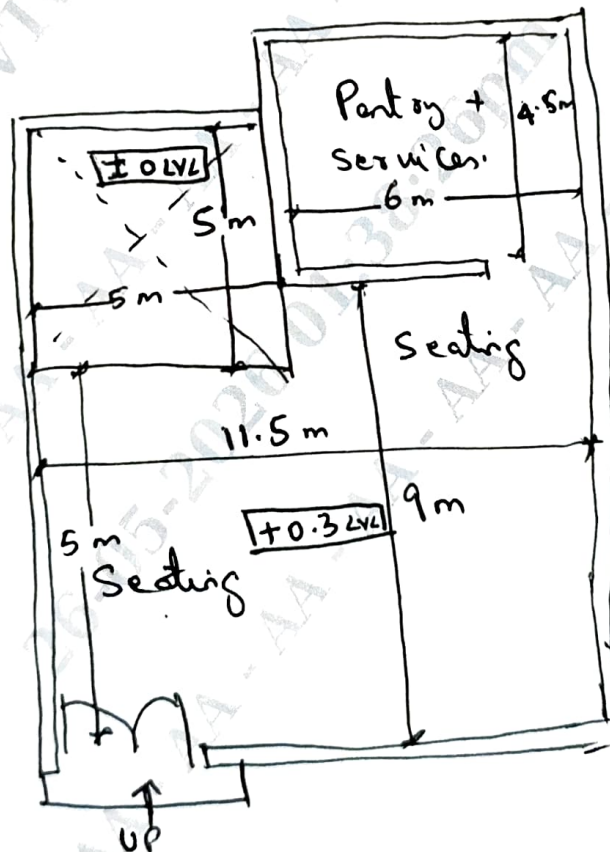


Fig.Q10

(20 Marks)
