

USN

--	--	--	--	--	--	--	--	--	--

Sixth Semester B.E. Degree Examination, June/July 2023  
(Mechatronics Engineering)

**COMPUTER AIDED MACHINE DRAWING**

Time: 3 Hours

Max. Marks: 100

Instructions to Candidates:

1. Answer any ONE question from each part
2. Use FIRST ANGLE projection only.
3. Missing data if any may suitably be assumed and mentioned
4. All the dimensions are in mm.
5. Usage of calculators and drawing instruments are allowed

PART - A

1. A cone of base diameter 50mm and axis length 65mm rests with its base on the HP. Draw the true shape of section made by a section plane perpendicular to the VP and inclined to the HP at 50° and passing through an end point on the circumference of the base circle of the cone. (25 Marks)
2. Draw the front and side view of square headed bolt of 100mm long, 25mm diameter with a washer and square nut. (25 Marks)

PART - B

3. Draw a Knuckle joint to connect two rods of 25mm diameter showing sectional front view and top view. Indicate all the proportions with dimensions. (25 Marks)
4. Draw the sectional front view and side view of a Pin type flexible coupling to connect two rods of Diameter 20 mm. Indicate all dimensions. (25 Marks)

PART - C

5. Figure 1 below shows the details of a Plummer block. Assemble The parts of the Plummer block and show the following views
  - a. Half sectional front view showing the left half in section
  - b. Top views(50 Marks)
6. Figure 2 shows the details of a screw jack. Assemble the parts of the screw jack and show the following views
  - a. Half sectional front view showing the right half in section
  - b. Top views(50 Marks)

Details of a Plummer Block

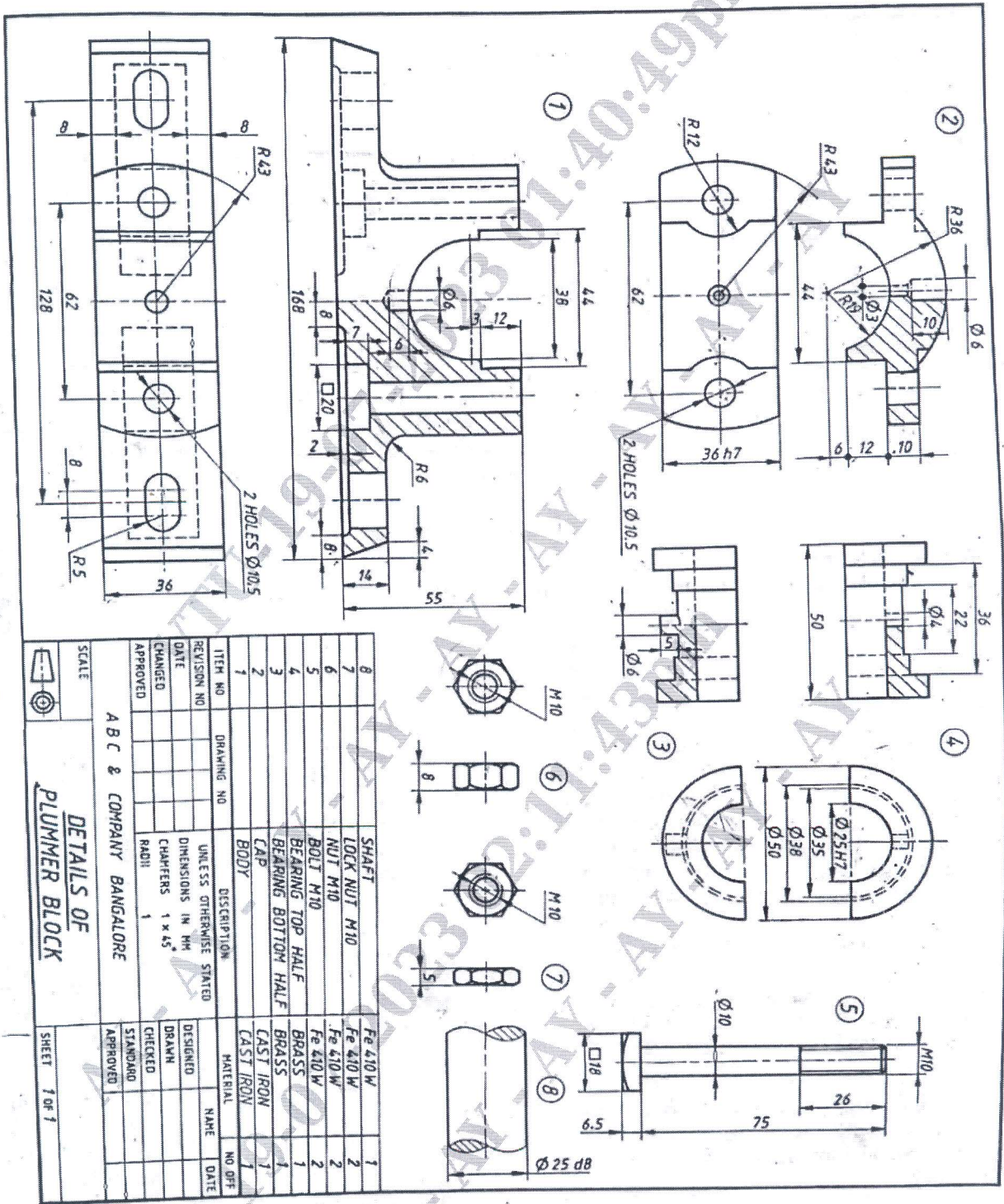
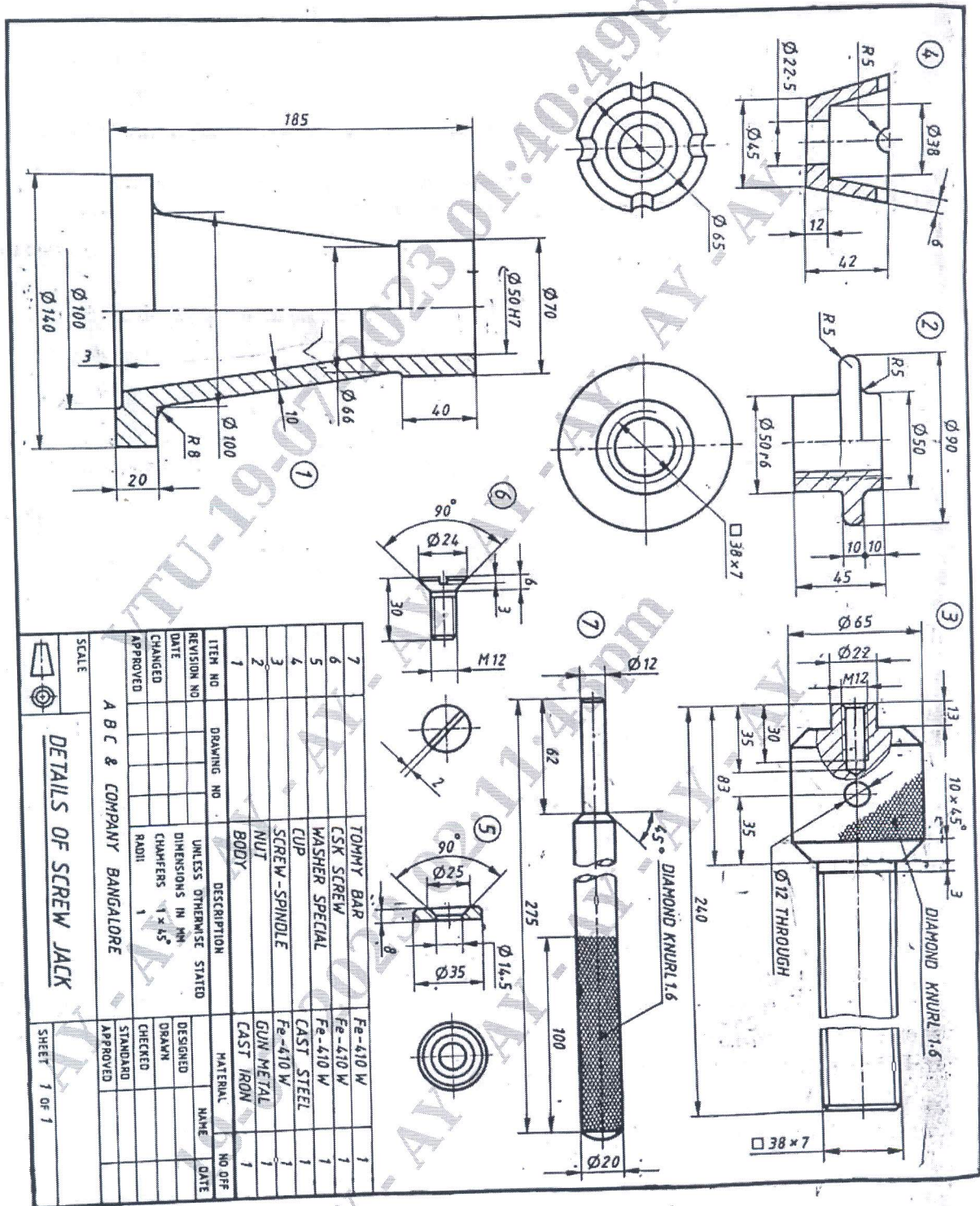


Figure 1: Details of Plummer block





Details of a Screw Jack

Figure 2: Details of Screw jack