



CBCS SCHEME

USN

--	--	--	--	--	--	--	--	--	--

15ARC46/15ENG46

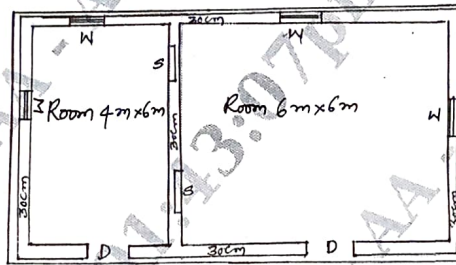
Fourth Semester B.Arch. Degree Examination, July/August 2021 Specification, Quantity and Costing of Buildings

Time: 3 hrs.

Max. Marks: 100

Note: Answer any FIVE full questions.

- 1 a. Explain the need of Estimation. (07 Marks)
b. Explain the factors affecting estimation of a building. (13 Marks)
- 2 a. Write detailed specification for Earth work in excavation in foundation. (10 Marks)
b. Write detailed specification for cement concrete 1 : 2 : 4. (10 Marks)
- 3 Estimate the quantities of the following items of a two roomed building from Fig. Q (3).
 - (i) Earthwork in excavation in foundation.
 - (ii) Cement concrete in foundation.
 - (iii) Size stone masonry in CM 1 : 6 for foundation and plinth.
 - (iv) 2.5 cm D.P.C
 - (v) First class brick work in CM 1 : 4 for super structure.Use long wall-short wall method. (20 Marks)



PLAN

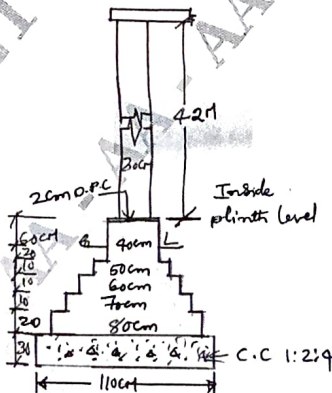


Fig.Q3

- Note : (i) Lintels over doors, windows and shelves are 15 cm thick.
(ii) Doors D – 1.2 × 2.1 m
Windows W – 1.00 × 1.5 m
Shelves - 1.00 × 1.5 m.

- 4 a. Why and how do you build flexibility, resilience and redundancy in BOQ? (10 Marks)
 b. What are mandatory tests and safety measures in specification? (10 Marks)
- 5 a. Why do rates vary? Write a note on PWD schedule of rates and market rates. (06 Marks)
 b. Explain concept of inflation and its effect on costing. Write about escalation clause, extra items and variations. (14 Marks)
- 6 Do detailed analysis of rates for the following:
 a. R.C.C works in beams, slabs etc 1 : 2 : 4. (10 Marks)
 b. First class brickwork in foundation and plinth in CM 1 : 6. (10 Marks)
- 7 Prepare a detailed estimate of a R.C.C. roof slab of 3 m clear span 12 cm thickness and 6 m clear long. Slab bearing on masonry is 150 mm around. Reinforcement consists of 12 mm diameter main bars 12 cm C/C alternate bent up and distribution 6 mm diameter at 18 cm C/C. R.C.C work in centring and shuttering but excluding reinforcement is Rs.8000/m³. Providing and tying reinforcement is Rs.90 per kg. Do sketching and prepare schedule of bars. (12 mm rod – 0.89 kg/m, 6 mm rod – 0.22 kg/m) (20 Marks)
- 8 Prepare a detailed estimate of a R.C.C beam of 8 m clear span (and 30 cm end bearing on masonry) and 75 cm × 40 cm in section. Beam top reinforcement is 2 Nos – 12 mm diameter bars. Beam bottom reinforcement is in 2 layers. First layer is 4 nos. 22 mm diameter bars, 2 nos. bent up at ends. II layer is 4 nos. 20 mm diameter bars, 2 nos. bent up at ends. Beam end stirrups consists of 10 mm diameter @ 12 cm C/C (5 nos.) and 10 mm diameter at 20 cm C/C (4 nos.) Provide 6 mm diameter stirrups in central remaining length. Do sketching and schedule of bars. Schedule of rates is same as Q.No.7 (12 mm diameter rod – 0.89 kg/m, 20 mm diameter rod – 2.47 kg/m, 22 mm diameter rod – 2.98 kg/m, 6 mm diameter rod – 0.22 kg/m) (20 Marks)
- 9 a. Write any four relevant specifications (Detailed) for water supply and sanitary works. (12 Marks)
 b. Write role of Architect in monitoring specifications for quality control. Write a note on Measurement Book (MB) and RA bills. (08 Marks)
- 10 Prepare a detailed estimate of a RCC column with footing from the given drawing Fig. Q10. Rates are as follows :
 a. Earthwork excavation in foundation Rs.500/m³.
 b. Cement concrete 1 : 4 : 8 in base Rs.4000/m³.
 c. R.C.C work 1 : 2 : 4 in footing including centring and shuttering, but excluding steel - Rs.8000/m³
 d. R.C.C work 1 : 2 : 4 in column above G.L including centring and shuttering but excluding steel – Rs.8400/m³
 e. Providing bending and tying steel reinforcement – Rs.90/kg. (20 Marks)

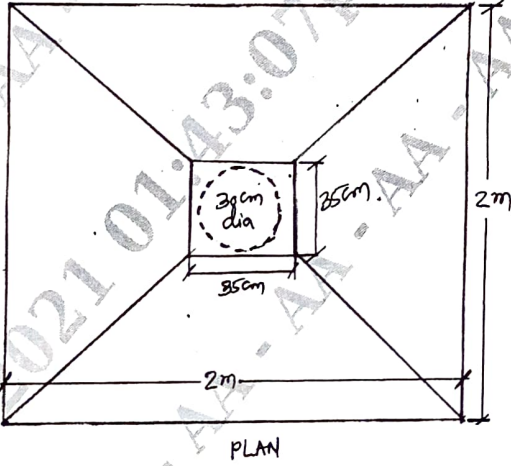
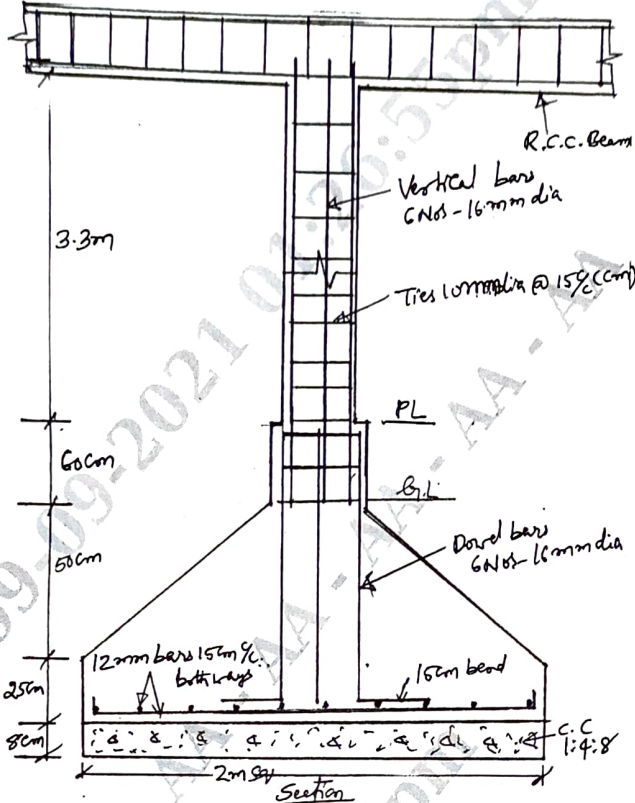


Fig. Q10
