

USN																				
-----	--	--	--	--	--	--	--	--	--	--	--	--	--	--	--	--	--	--	--	--

18ME36A/18MEA306/18MA36/18ME46A

Part – C

- 5. Figure 2 shows the details of a Machine vice. Assemble the parts of the Machine vice and show the following views.
 - a. Half sectional front view.
 - b. Top view.

50 Marks

- 6. Figure 2 shows the part drawing of a tail stock. Assemble the tail stock and show the following views.
 - a. Sectional front view showing the top spindle portion in section.
 - b. Left profile view.

50 Marks

USN

18ME36A/18MEA306/18MA36/18ME46A

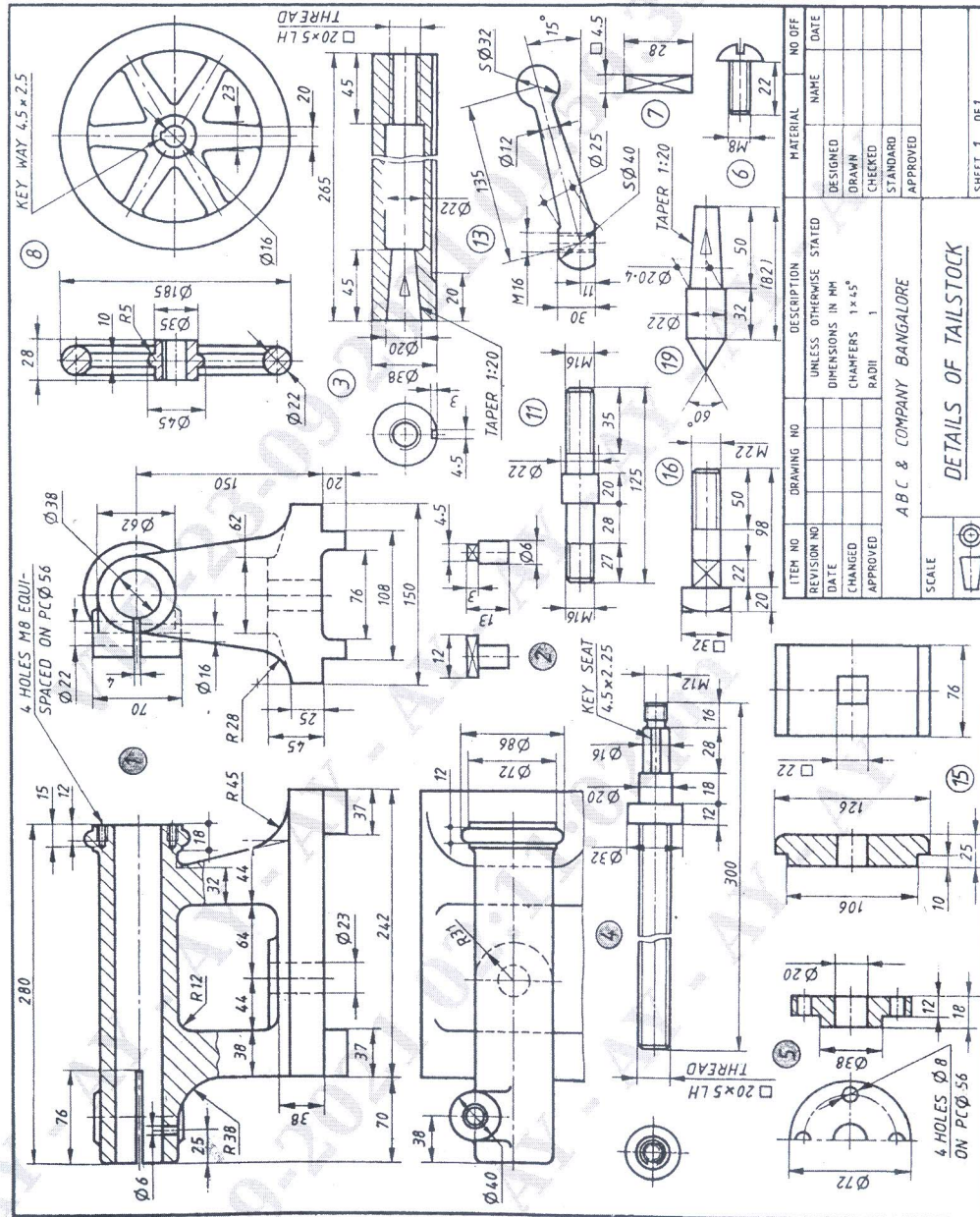


Figure 2: Details of Machine vice