

MENORRHAGIA

**PREPARED BY
Dr.JUSTIN JEYA AMUTHA**

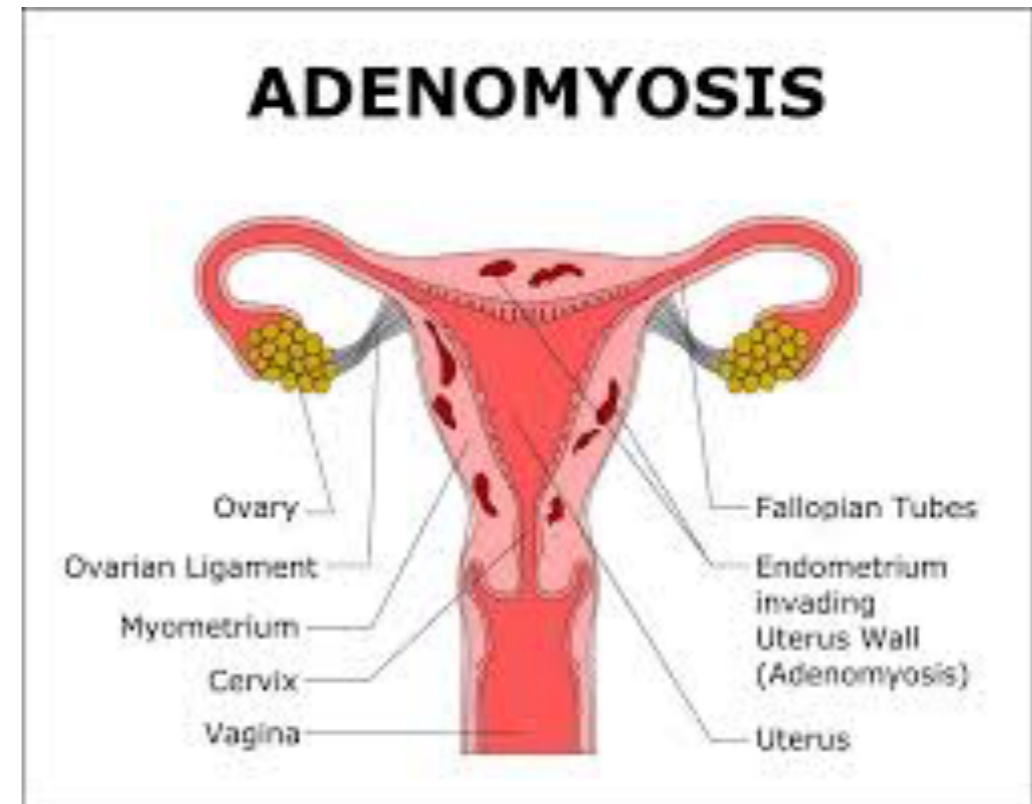
Introduction:

- It is the most common type of abnormal uterine bleeding characterized by heavy and prolonged menstrual bleeding. In some cases, bleeding may be so severe and daily activities become interrupted.



CAUSES

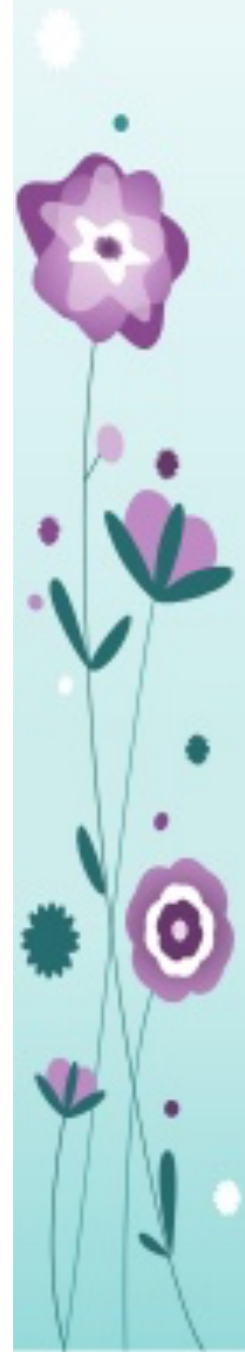
- A. HORMONE IMBALANCE
- B. DYSFUNCTION OF OVARIES
- C. UTERINE FIBROIDS
- D. POLYPS
- E. ADENOMYOSIS
- F. IUD
- G. PREGNANCY COMPLICATIONS
- H. INHERITED BLEEDING DISORDERS
- I. MEDICATIONS
- J. OTHER MEDICAL CONDITIONS



CLINICAL MANIFESTATIONS

Clinical Manifestations:

- Soaking through one or more sanitary pads or tampons every hour for several consecutive hours
- Needing to use double sanitary protection to control your menstrual flow
- Needing to wake up to change sanitary protection during the night



- Bleeding for longer than a week
- Passing blood clots with menstrual flow for more than one day
- Restricting daily activities due to heavy menstrual flow
- Symptoms of anemia, such as tiredness, fatigue or shortness of breath.

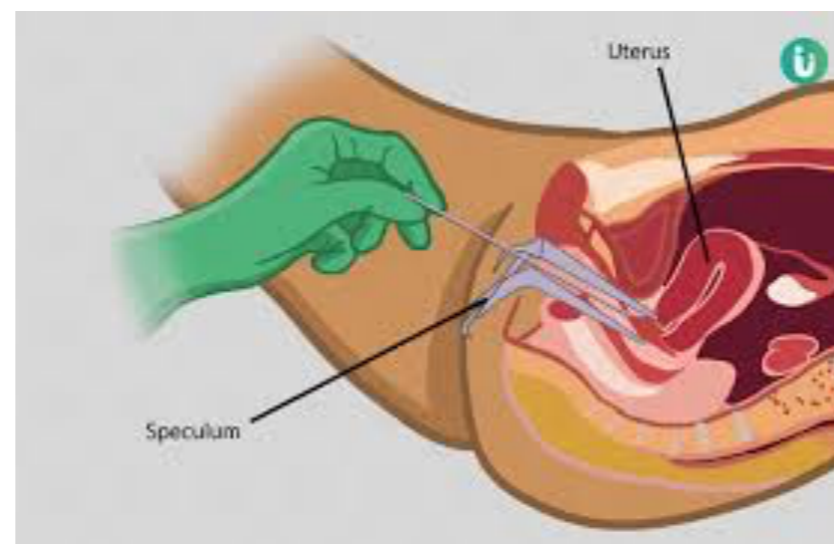
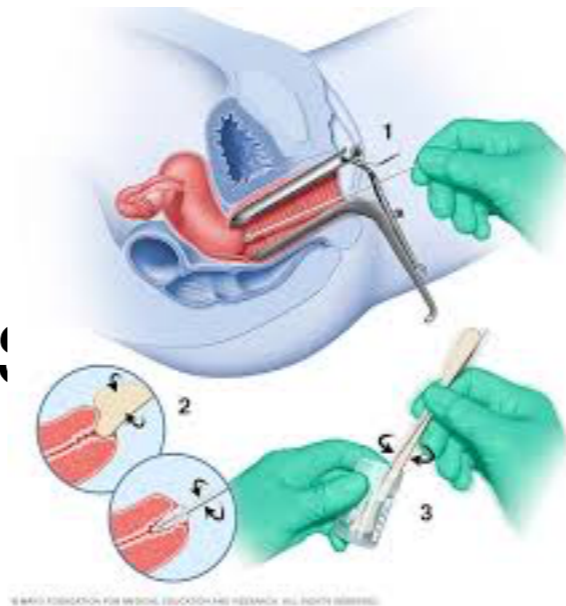


Diagnostic evaluation:

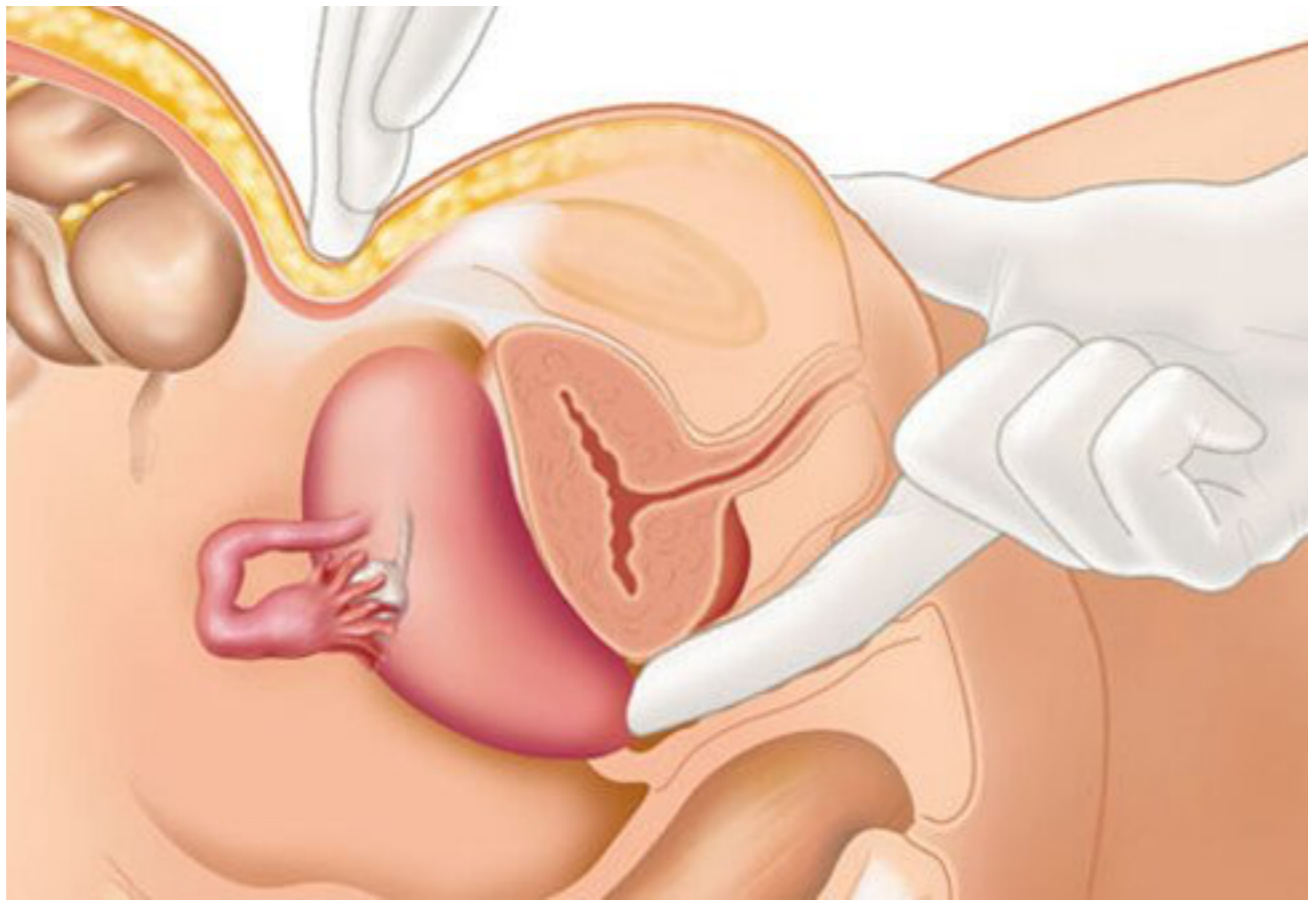
- History collection
- Physical examination
- **Blood tests.** A sample of your blood may be evaluated for iron deficiency (anemia) and other conditions, such as thyroid disorders or blood-clotting abnormalities.



- PAP TEST
- ENDOMETRIAL BIOPSY
- USG
- SHG
- HYSTEROSCOPY

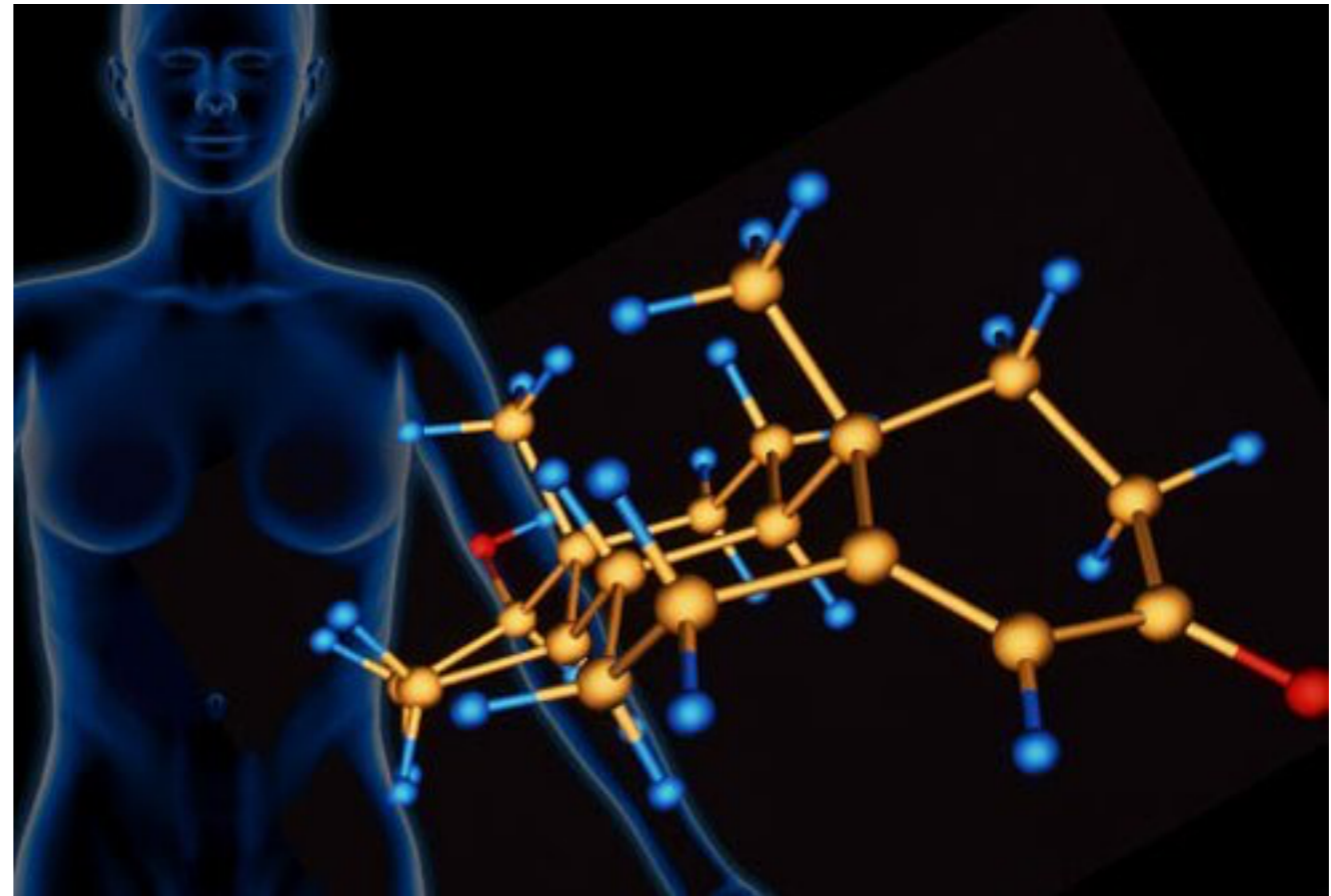


Pelvic examination

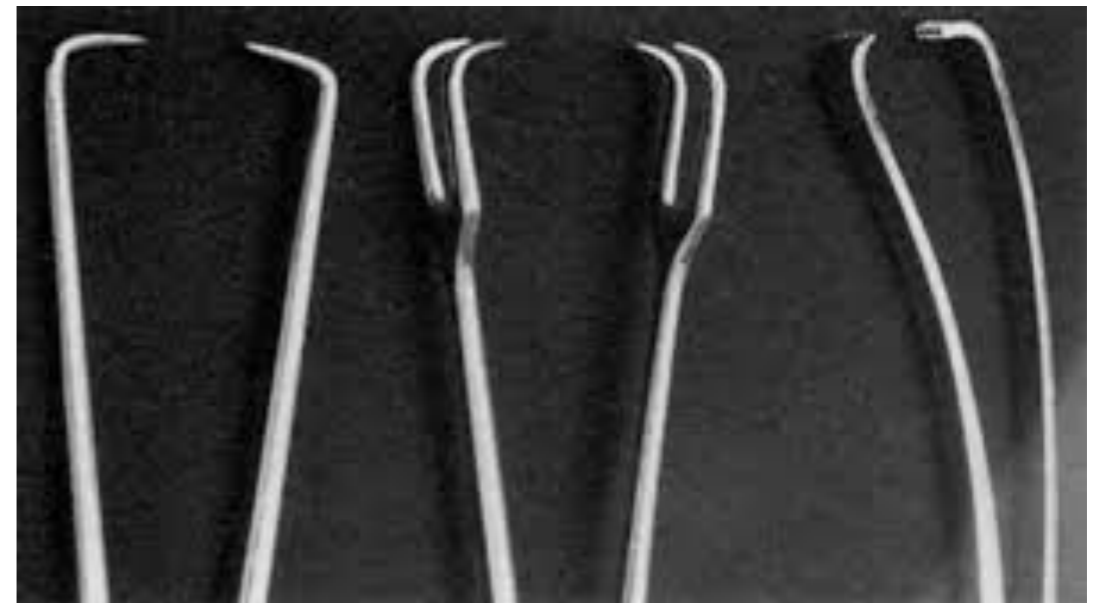
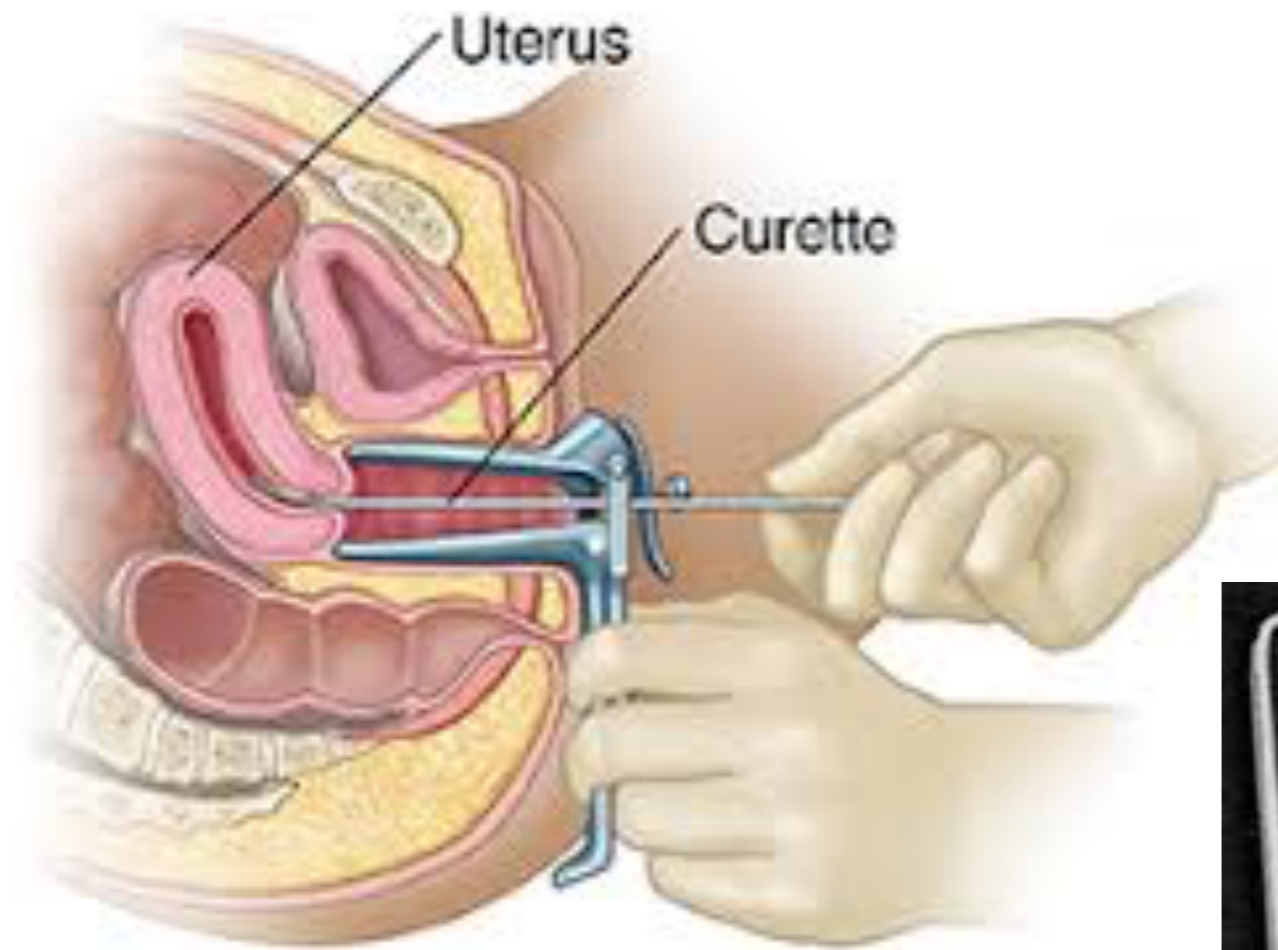


MANAGEMENT

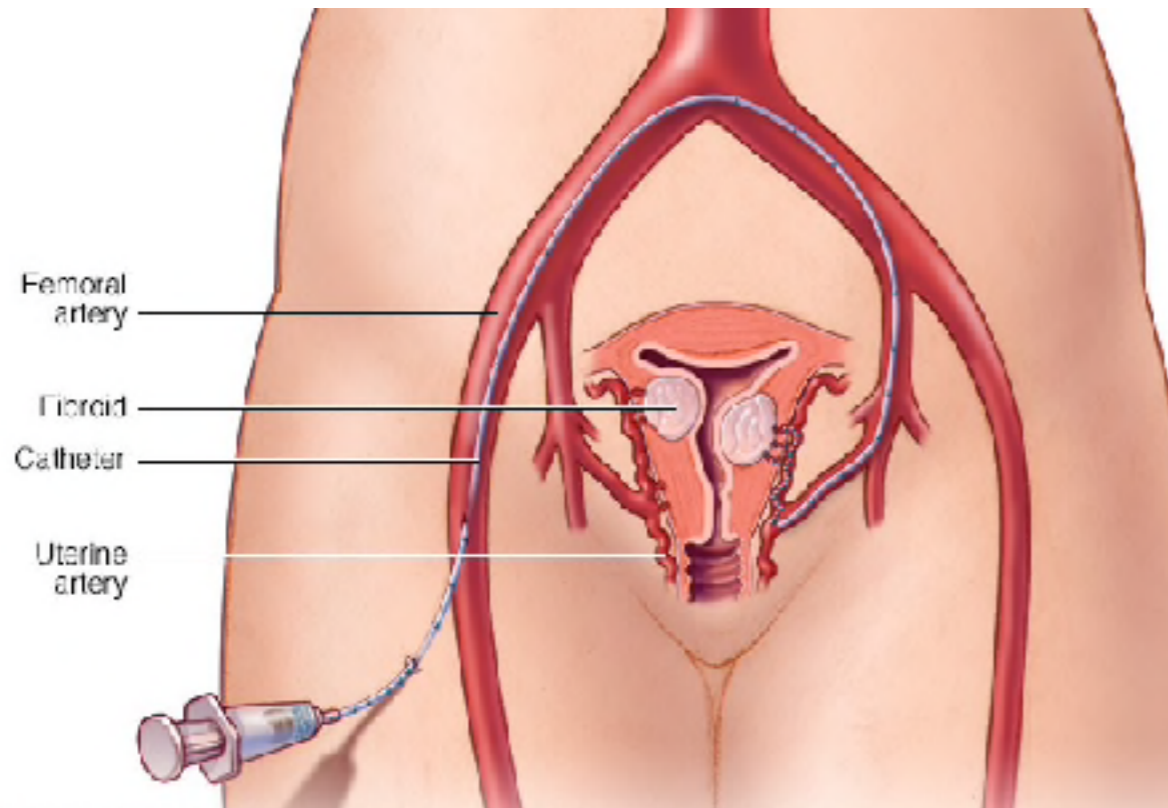
- IRON SUPPLEMENTS
- NSAID
- ORAL CONTRACEPTIVES
- ORAL PROGESTERONE
- HORMONAL IUD
- *D & C (DILATION & CURETTAGE)*
- *UTERINE ARTERY EMBOLIZATION*
- *FOCUSED ULTRASOUND ABLATION*
- *MYOMECTOMY*
- *ENDOMETRIAL ABLATION*
- *ENDOMETRIAL RESECTION*
- *HYSTERECTOMY*



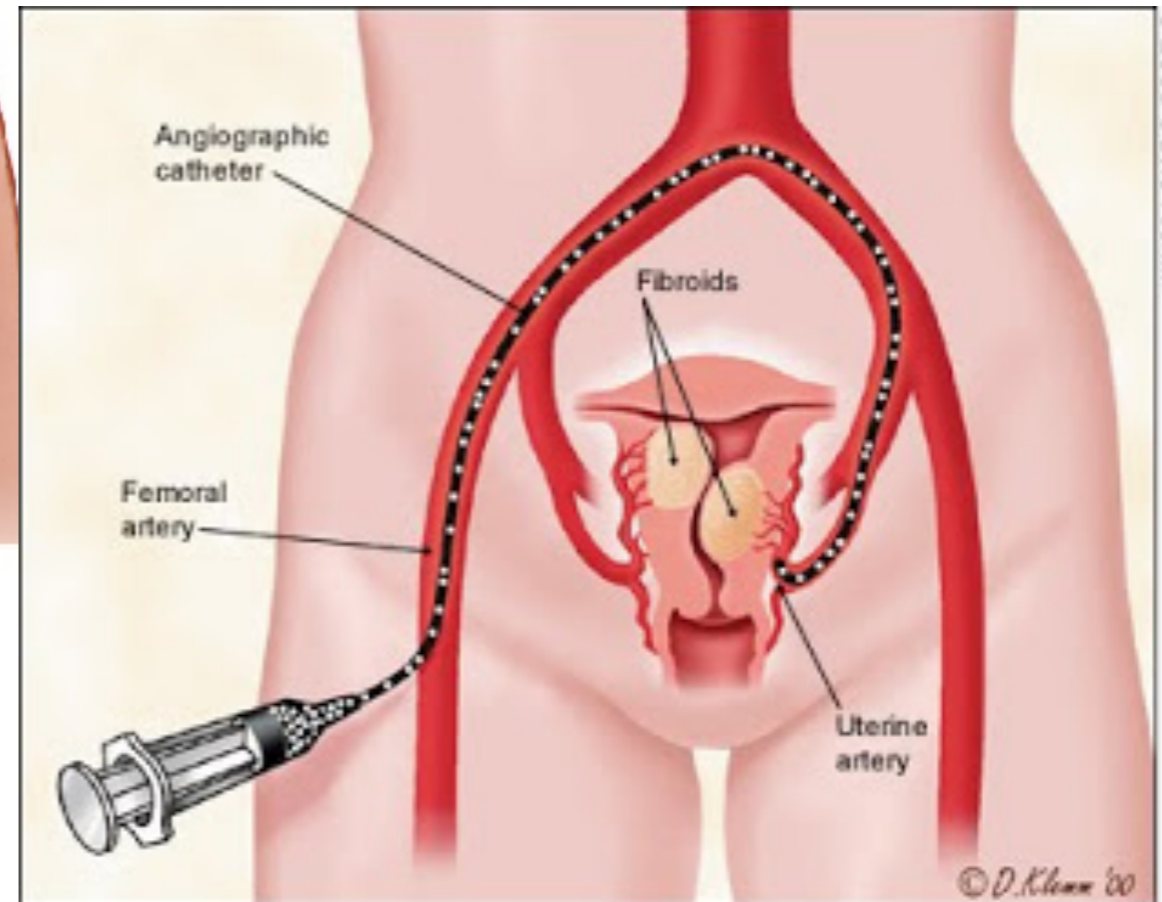
DILATION



UTERINE ARTERY EMBOLIZATION



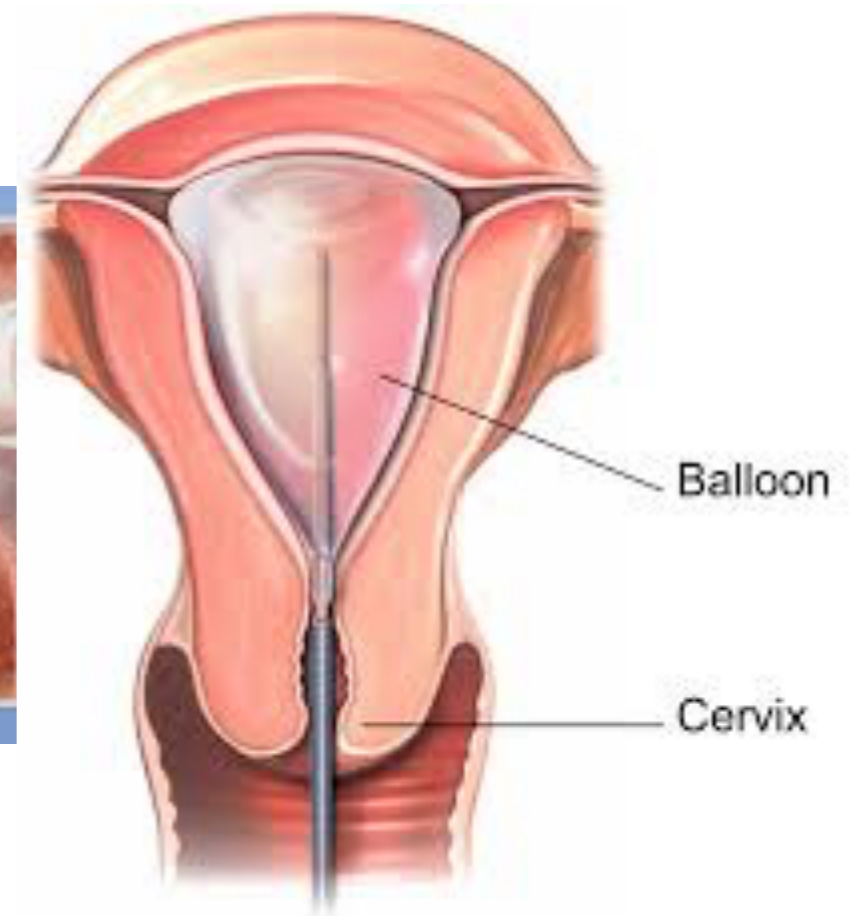
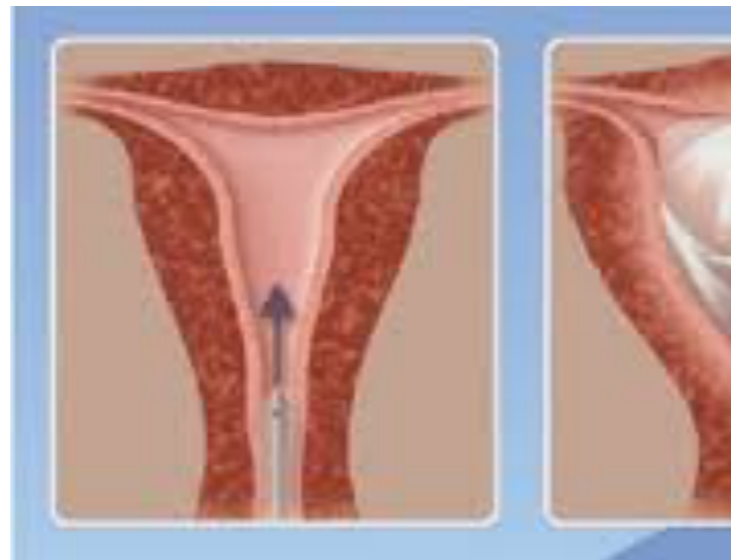
© MAYO FOUNDATION FOR MEDICAL EDUCATION AND RESEARCH. ALL RIGHTS RESERVED.



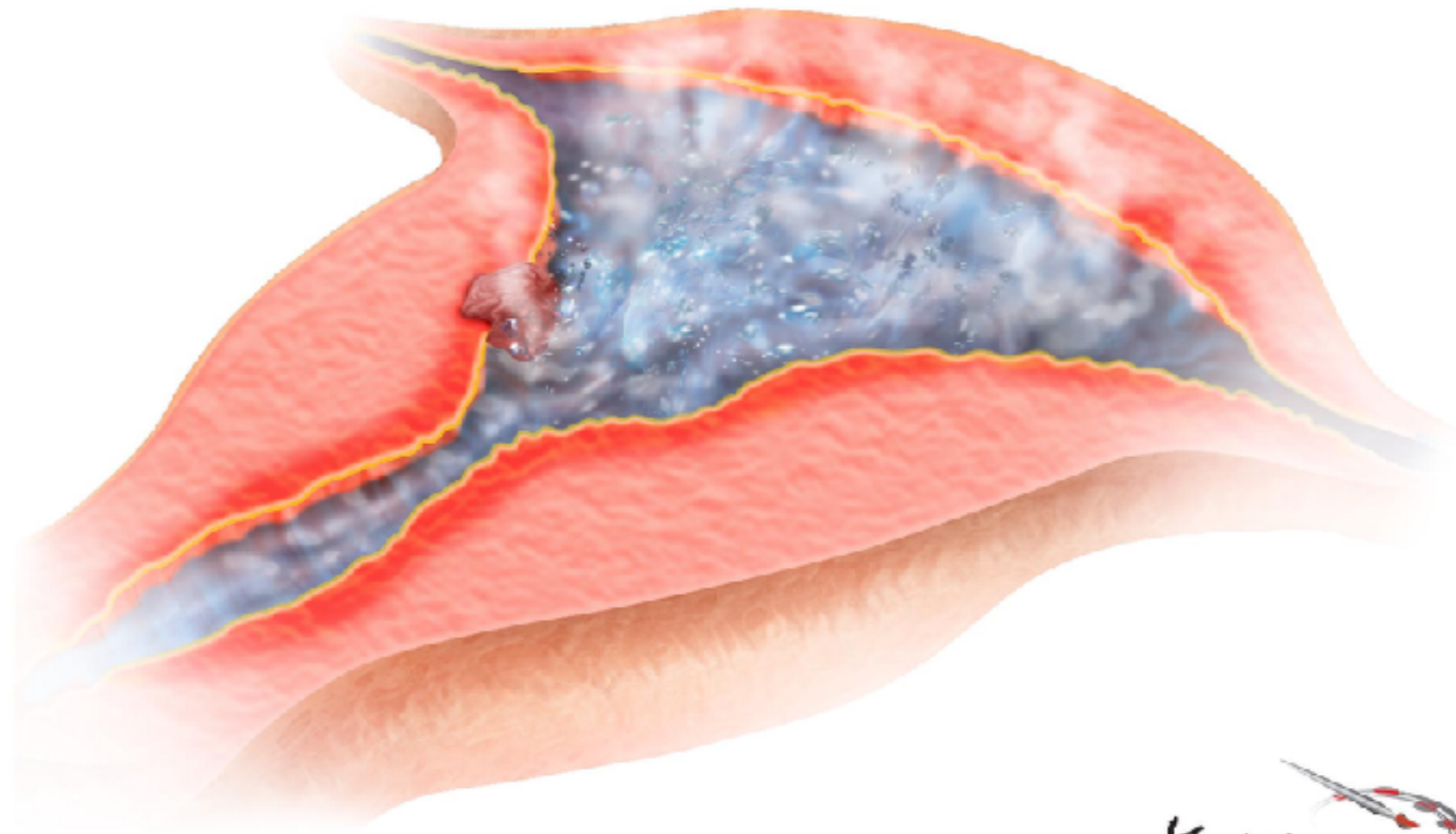
© D. Klemm '00

ENDOMETRIAL ABLATION

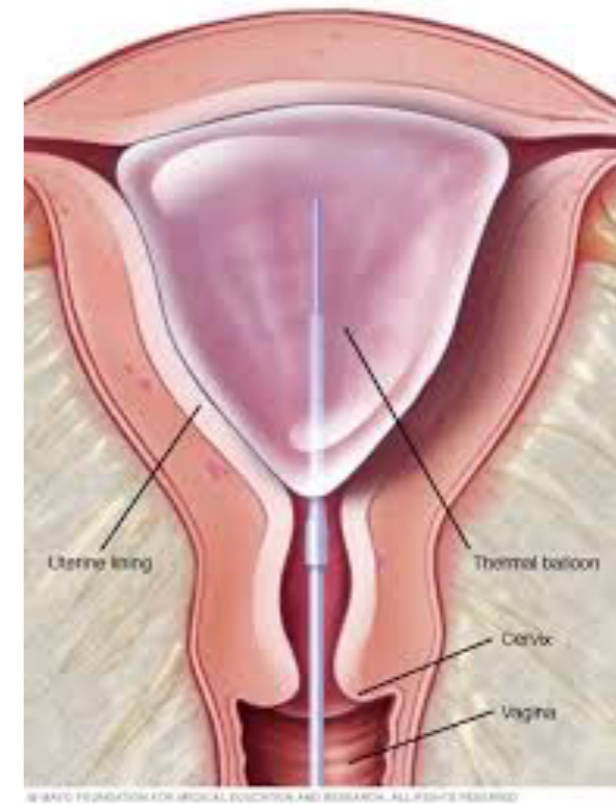
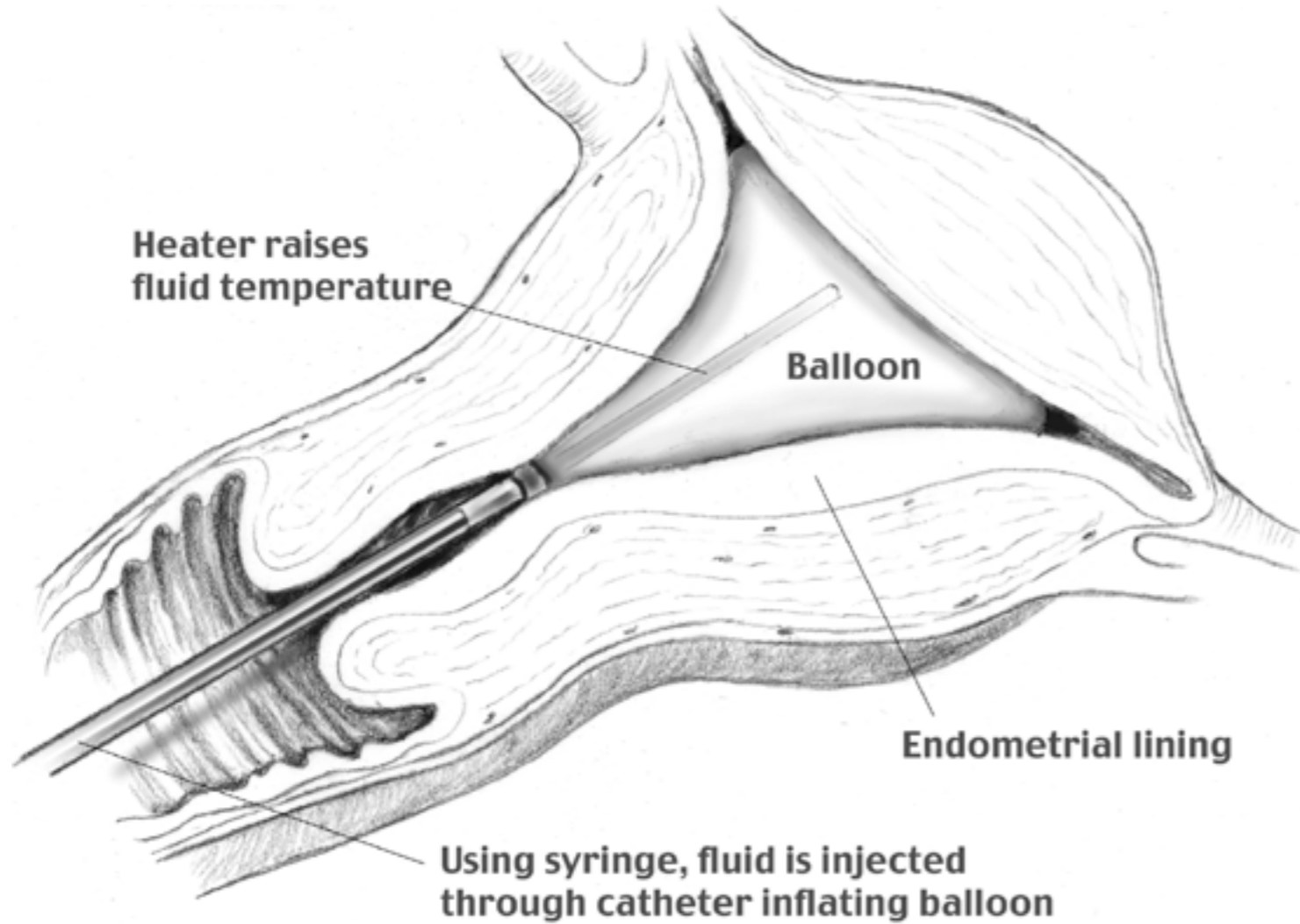
1. Hydrothermal
2. Balloon therapy
3. High energy radio waves
4. Freezing (Cryo)
5. Microwave
6. Electrical
7. Rollerball ablation



Hydrothermal ablation



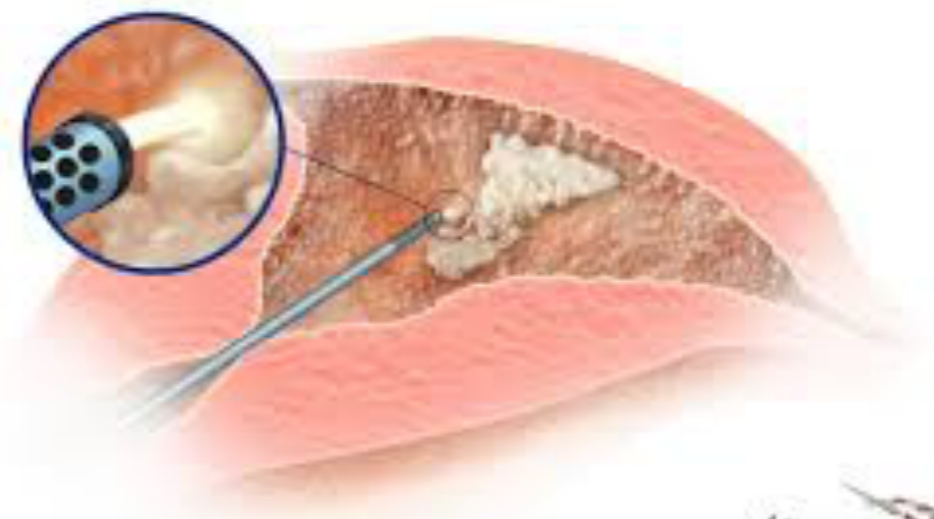
Balloon therapy



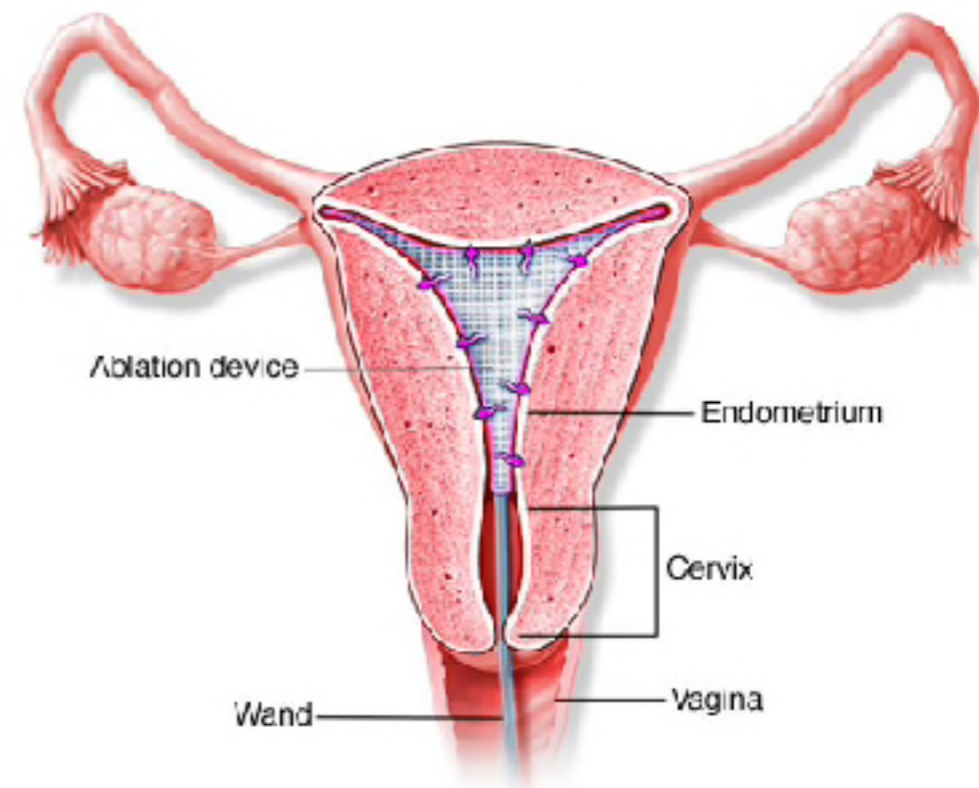
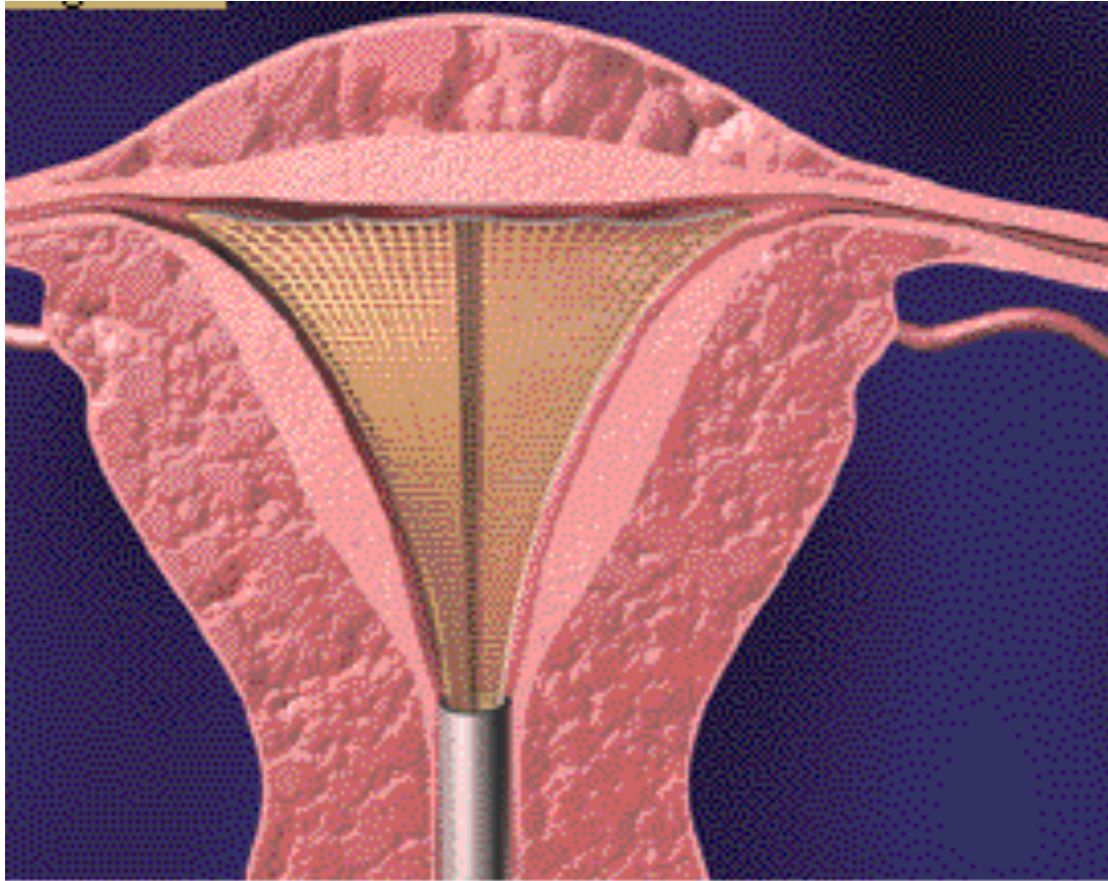
Microwave Endometrial Ablation (MEA)



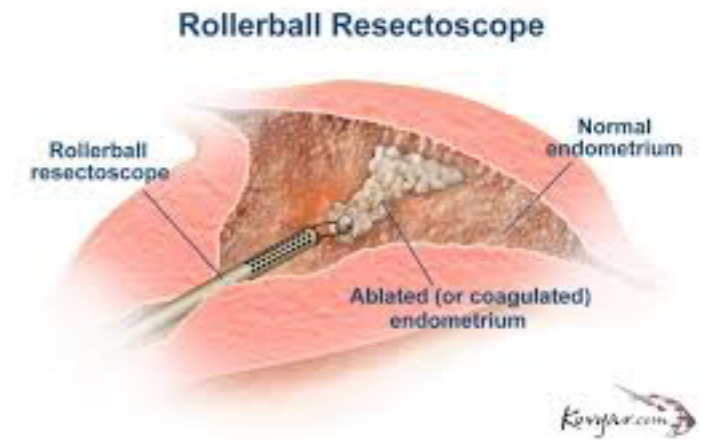
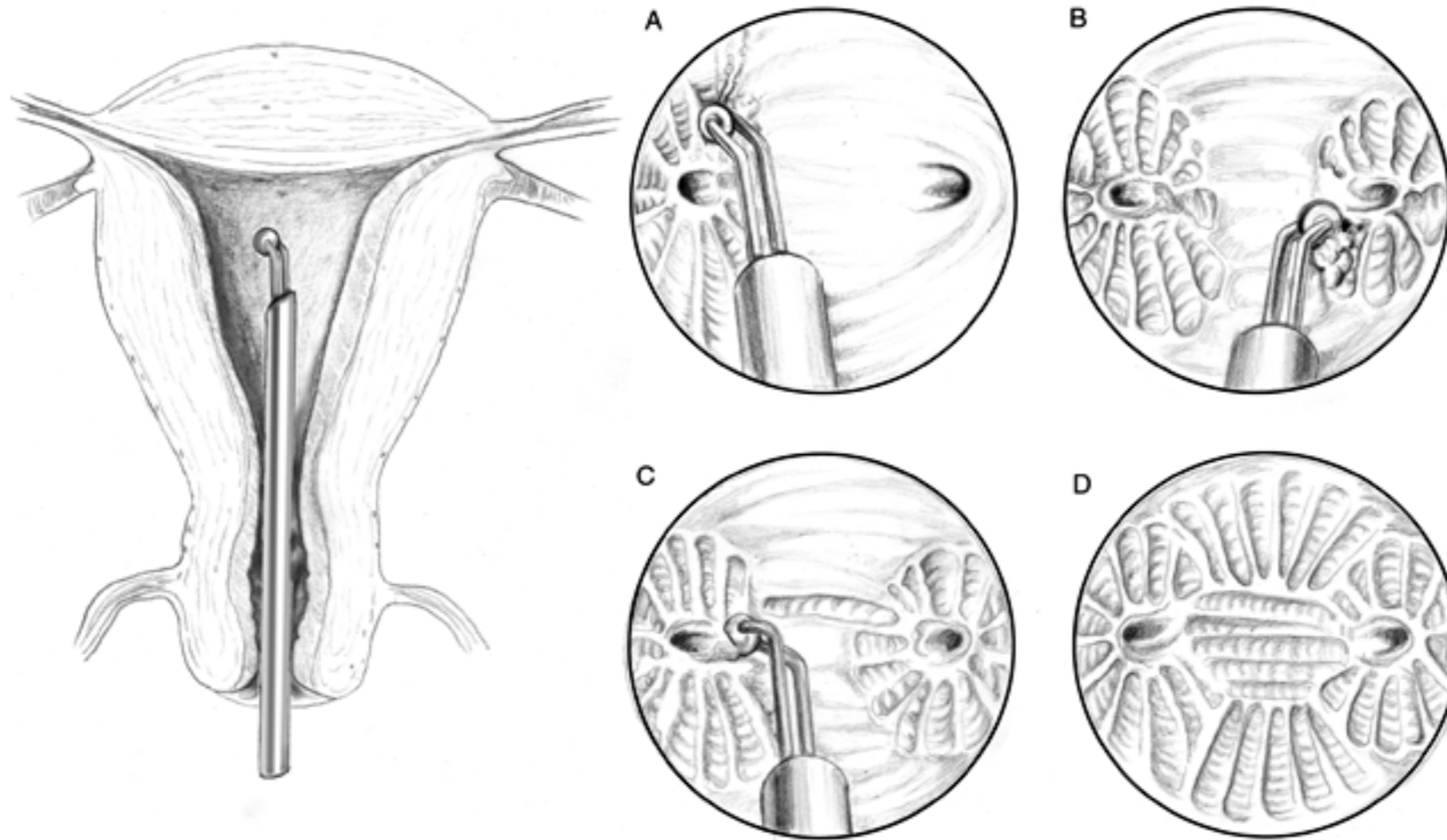
Nd-YAG laser



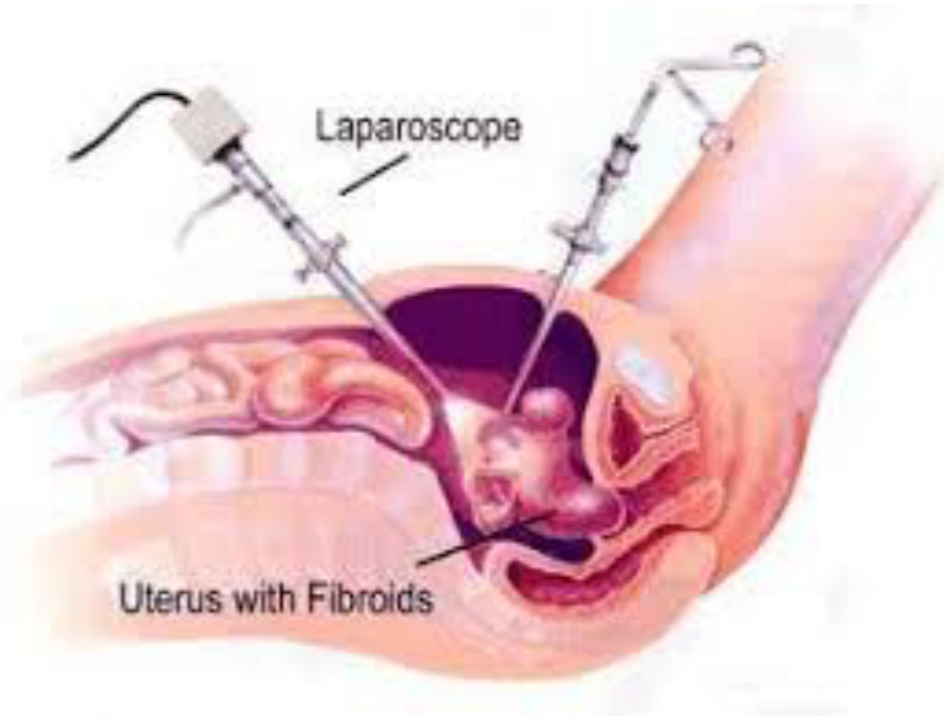
Radio frequency ablation



Rollerball ablation



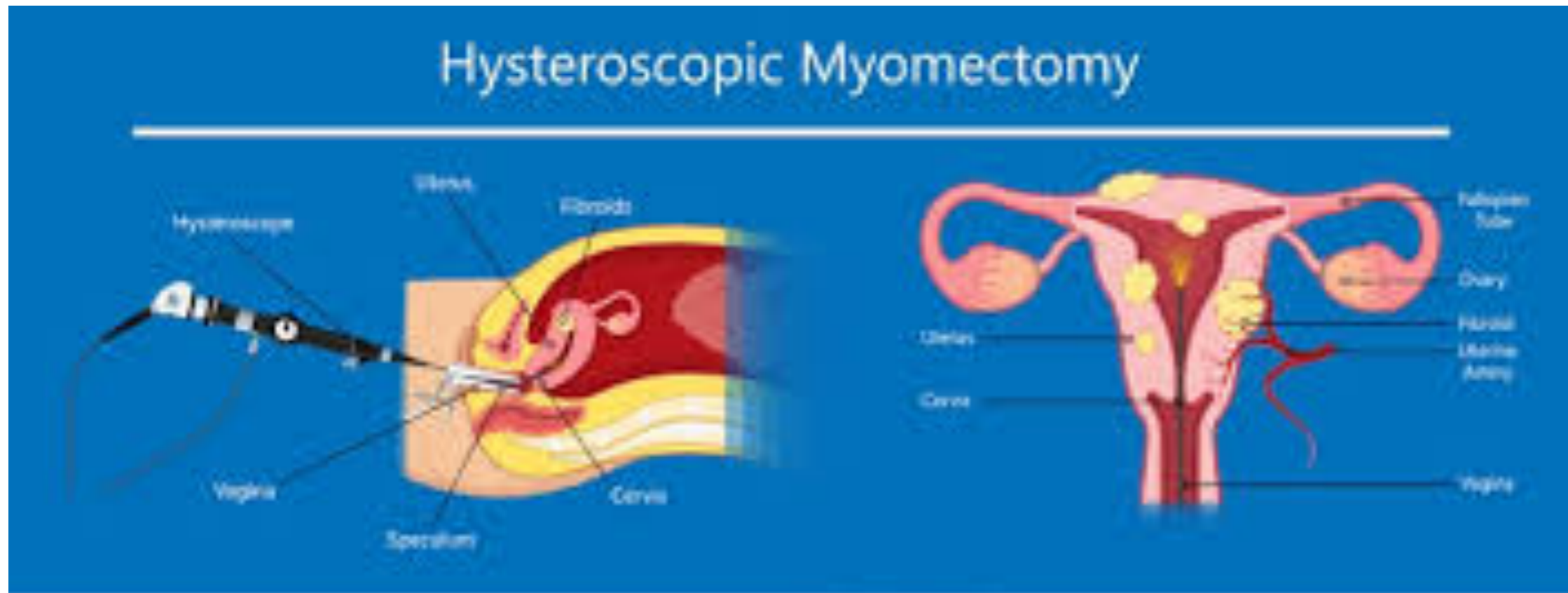
FIBROIDECTOMY



Fibroids Removal Surgery



MYOMECTOMY



shutterstock.com • 1104708523

Endometrial resection

