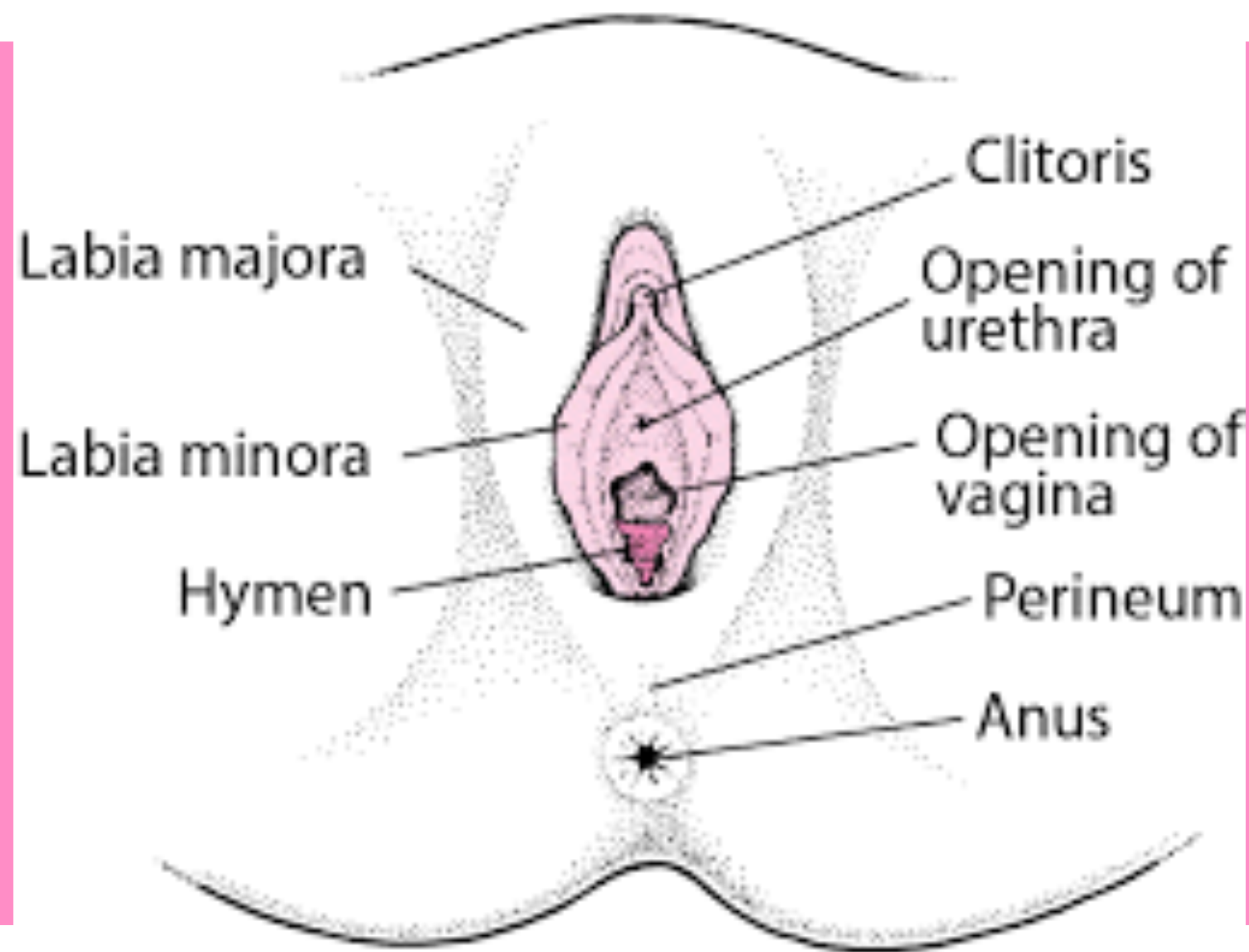


FEMALE REPRODUCTIVE SYSTEM

PREPARED BY
Dr.Justin Jeya Amutha





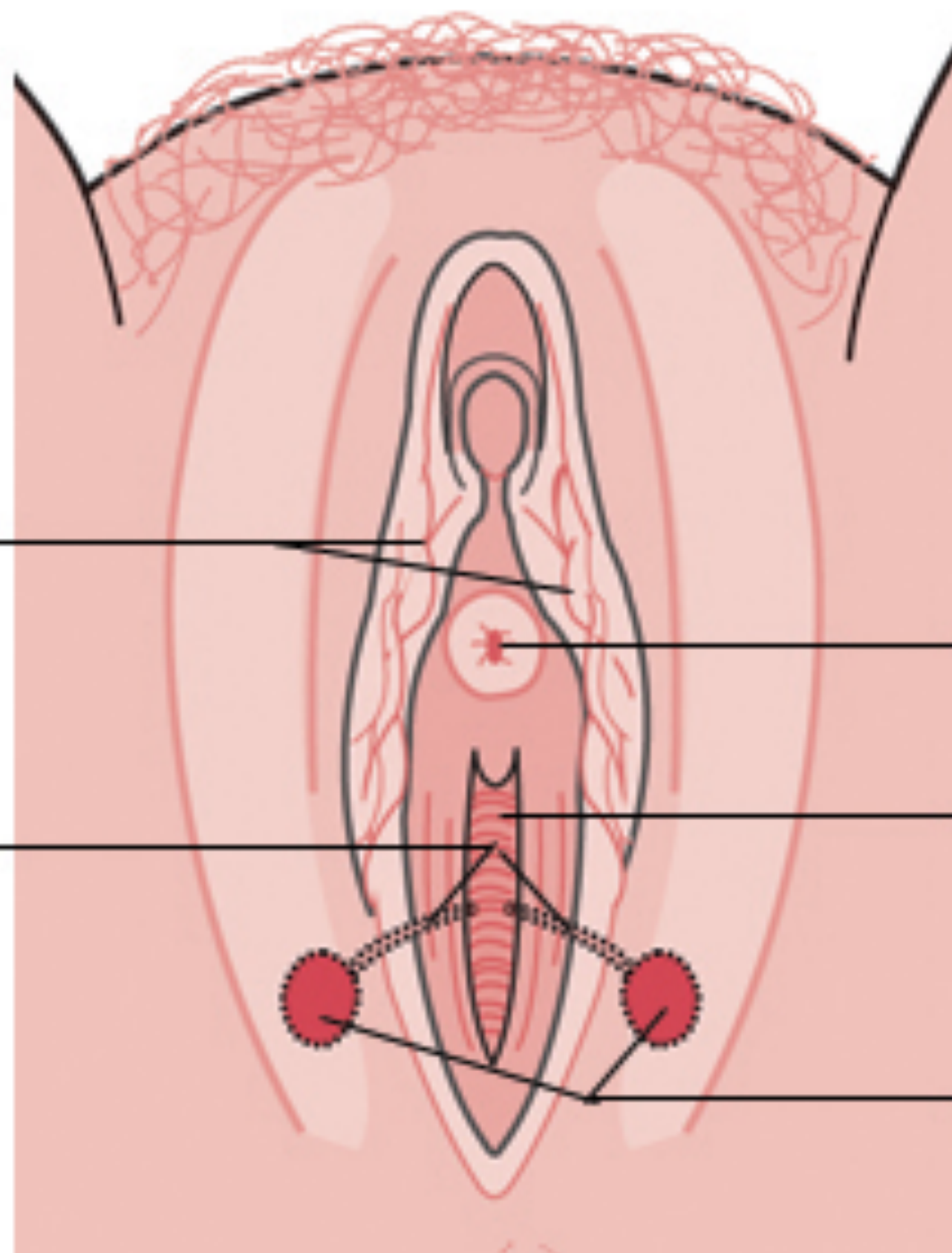
Labia
minora

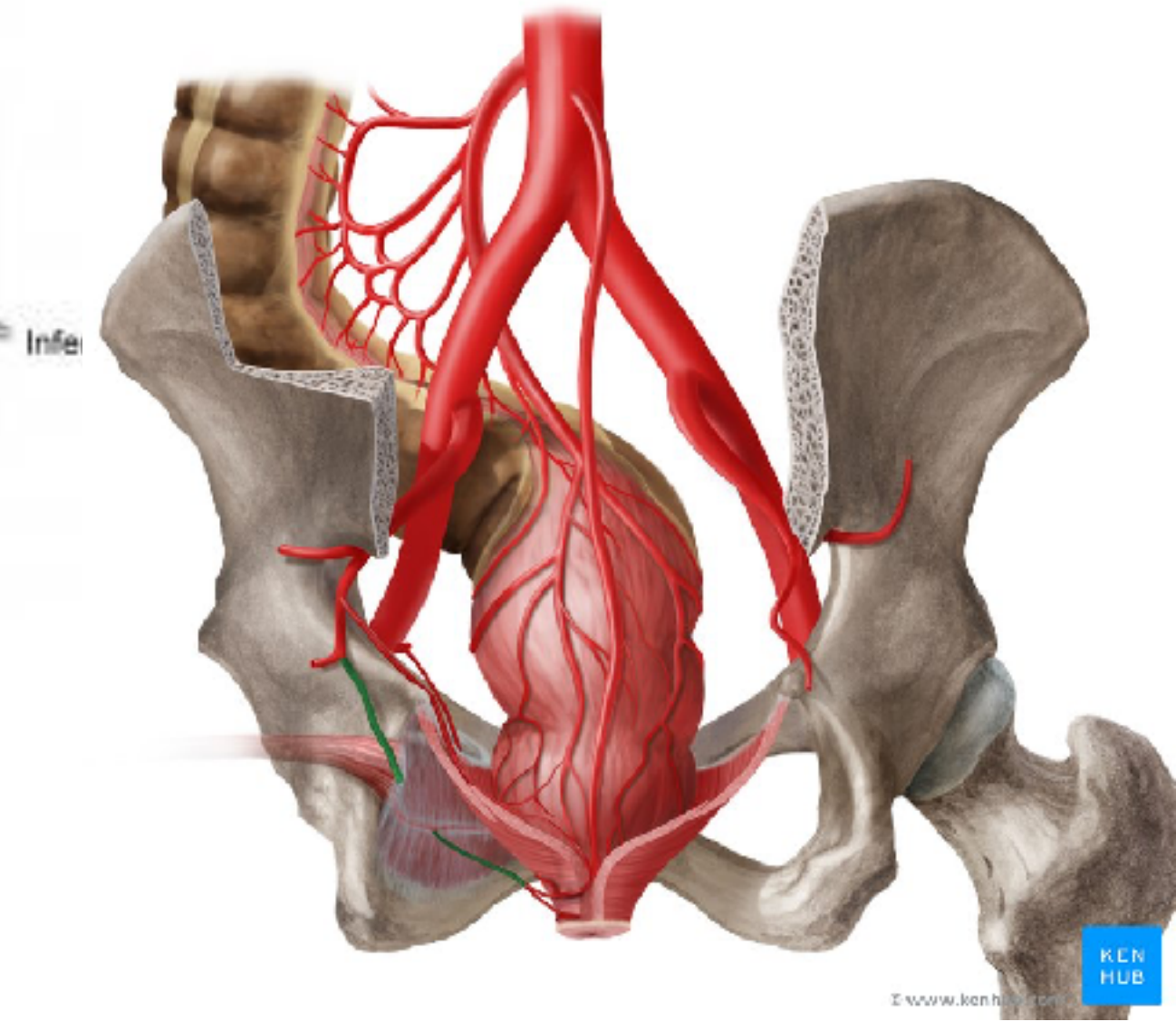
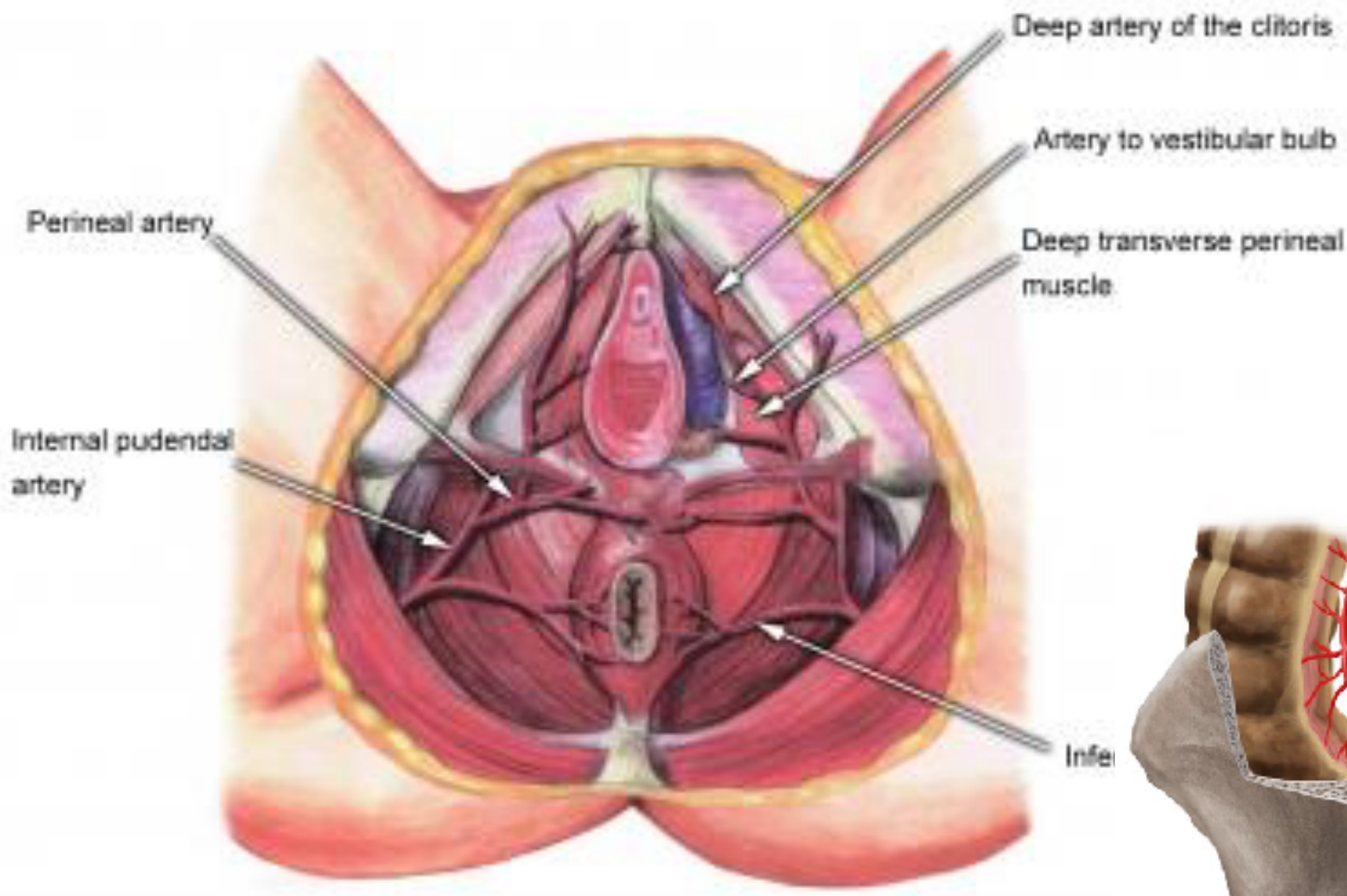
Bartholin's
gland ducts

Urethral
opening

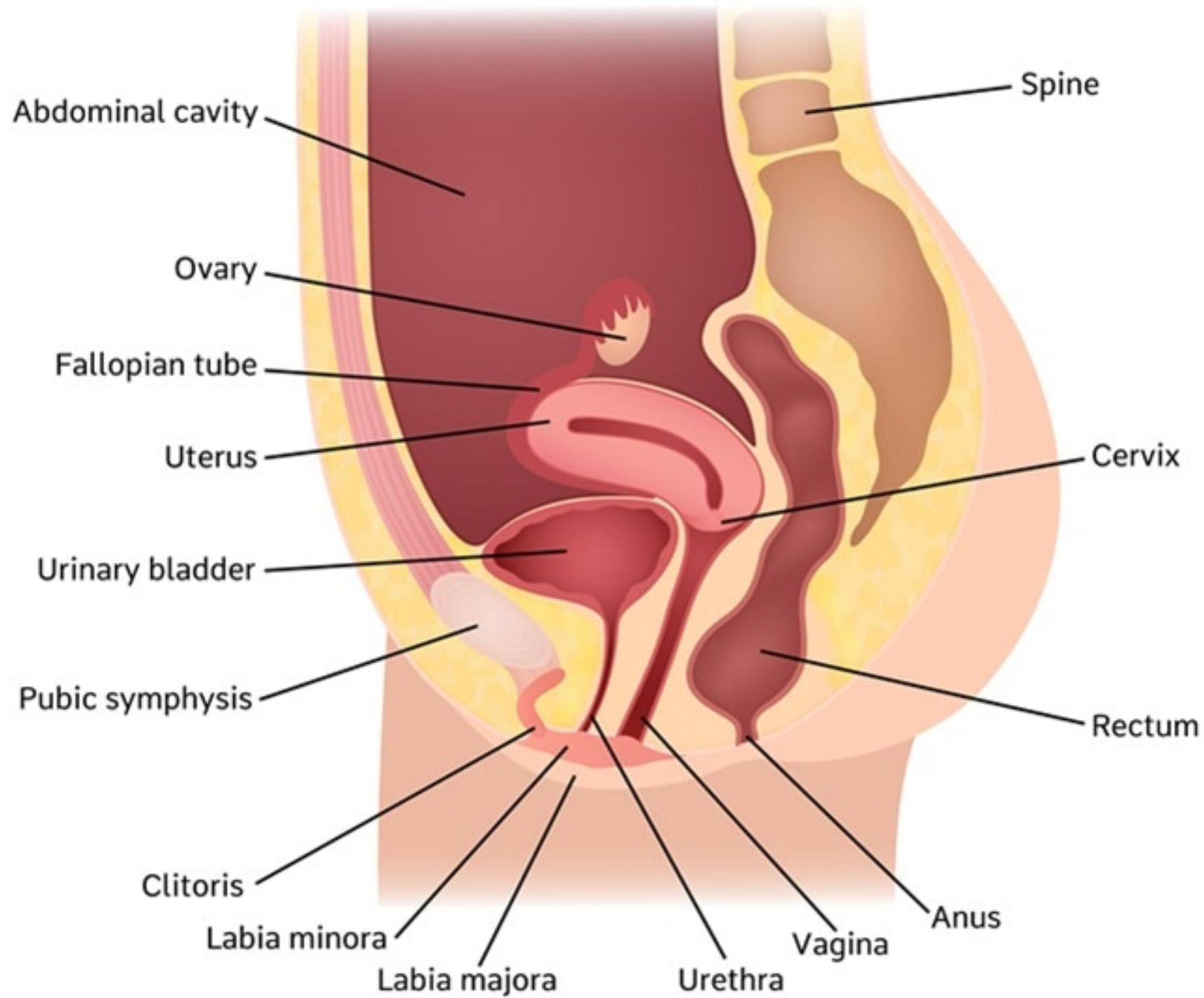
Vaginal
opening

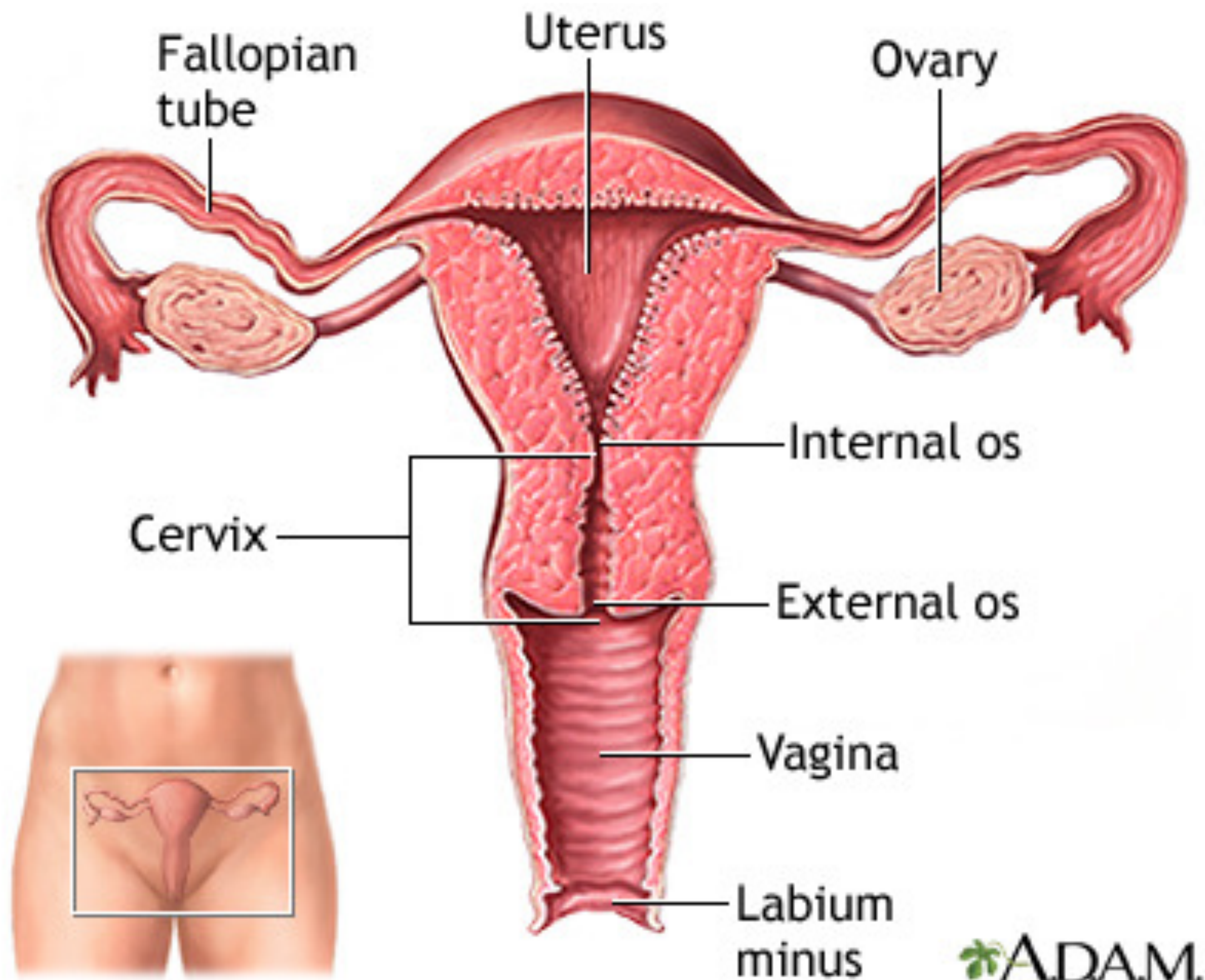
Bartholin's
gland ducts



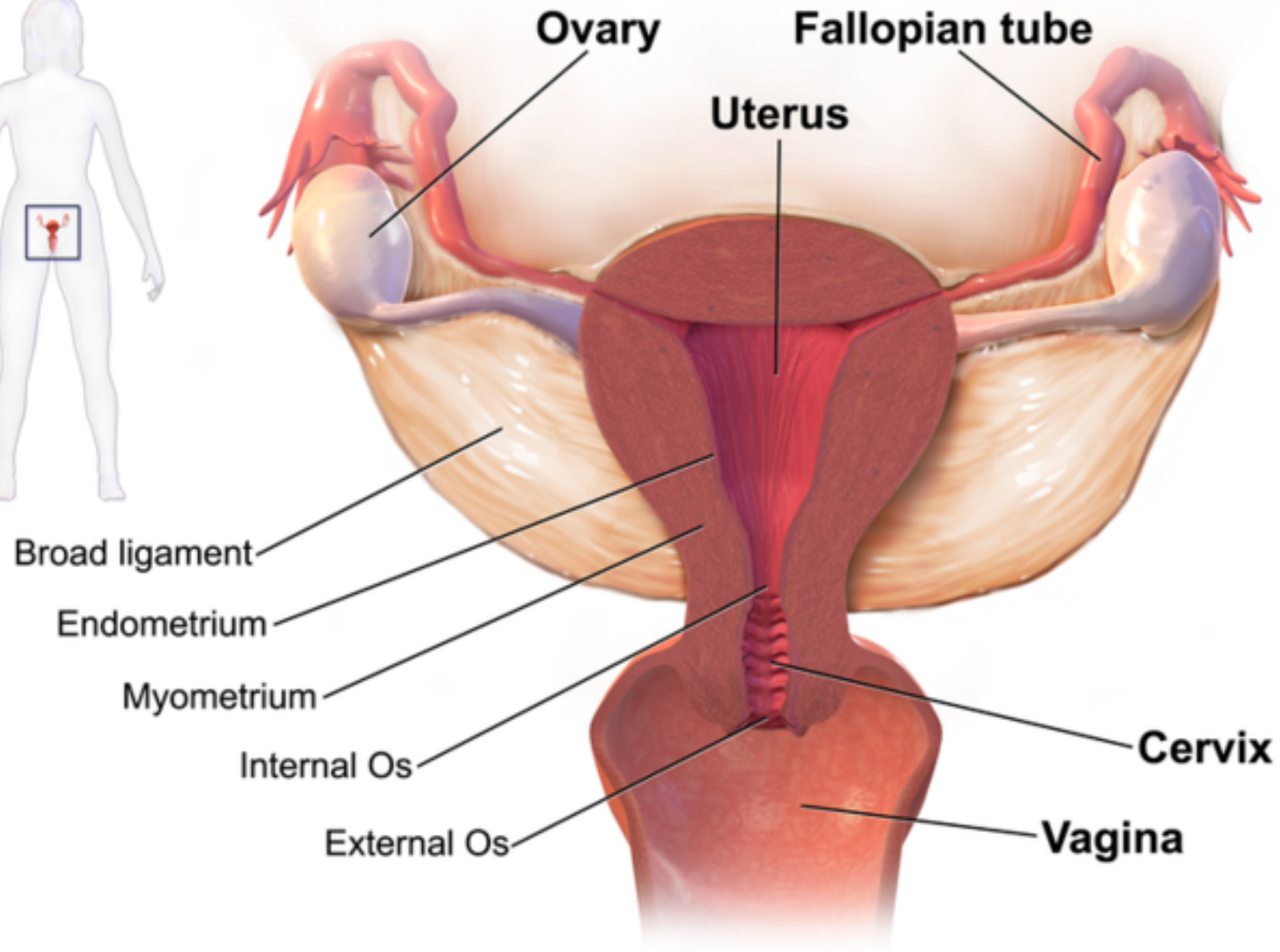


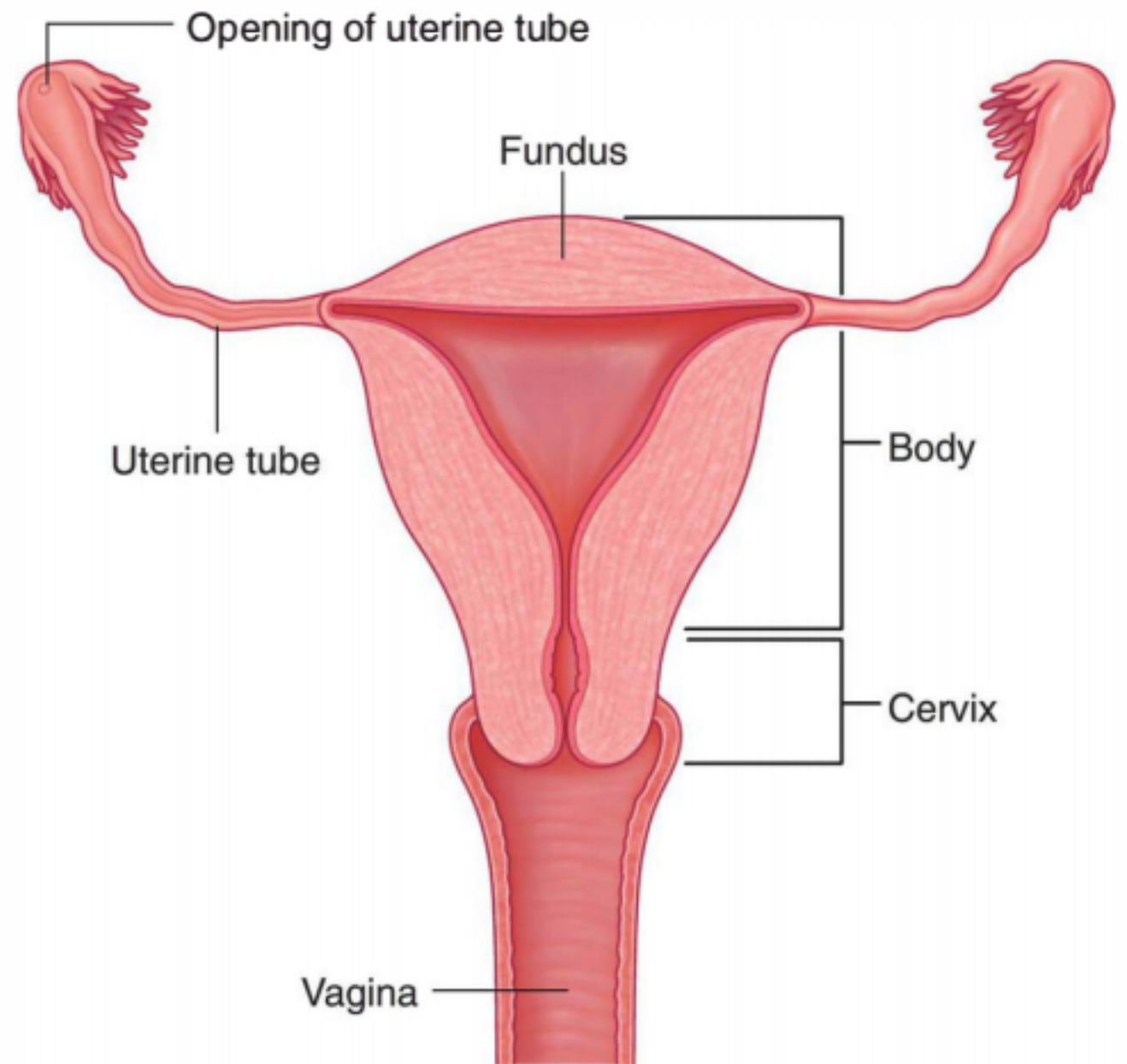
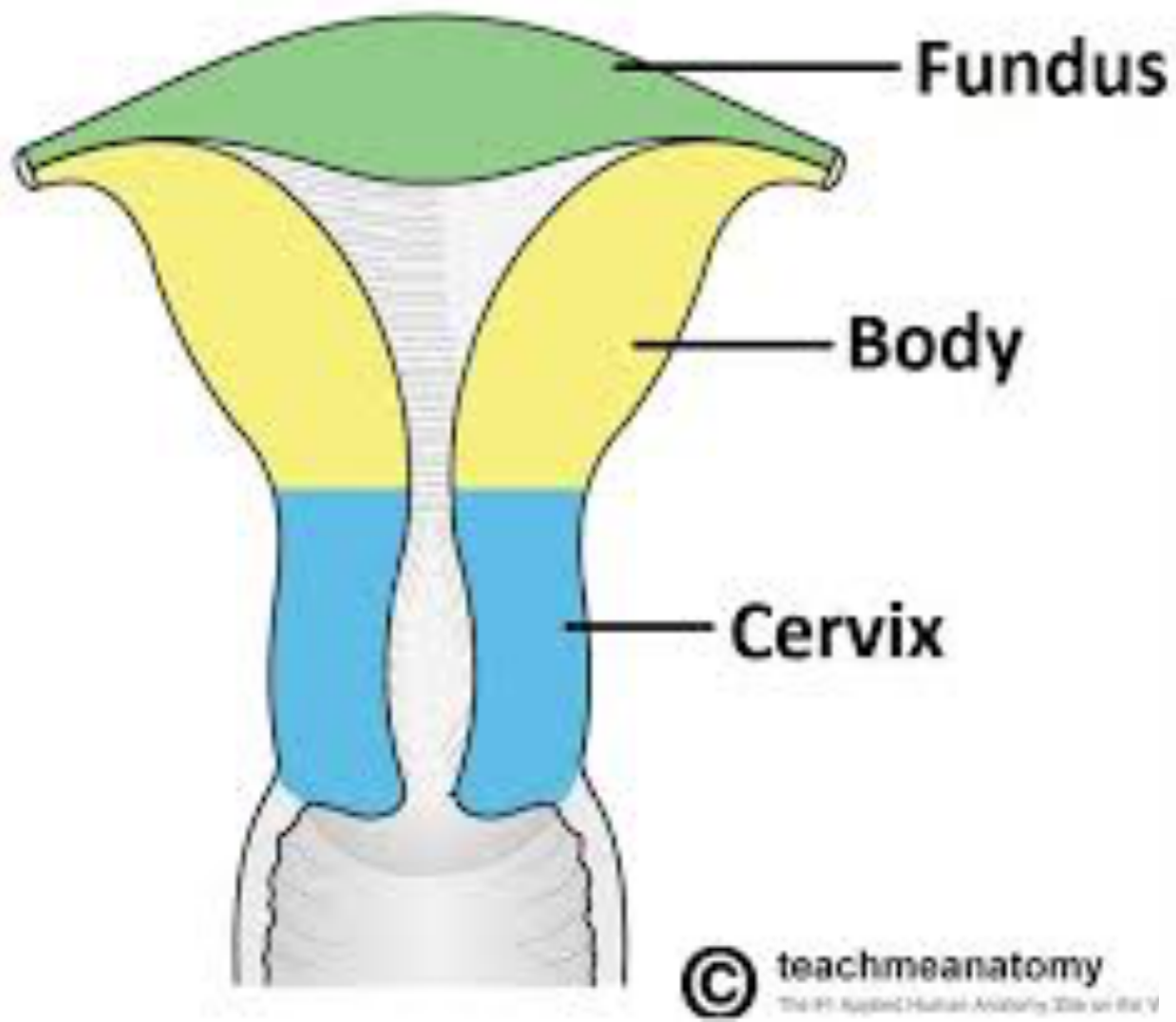
Female reproductive system



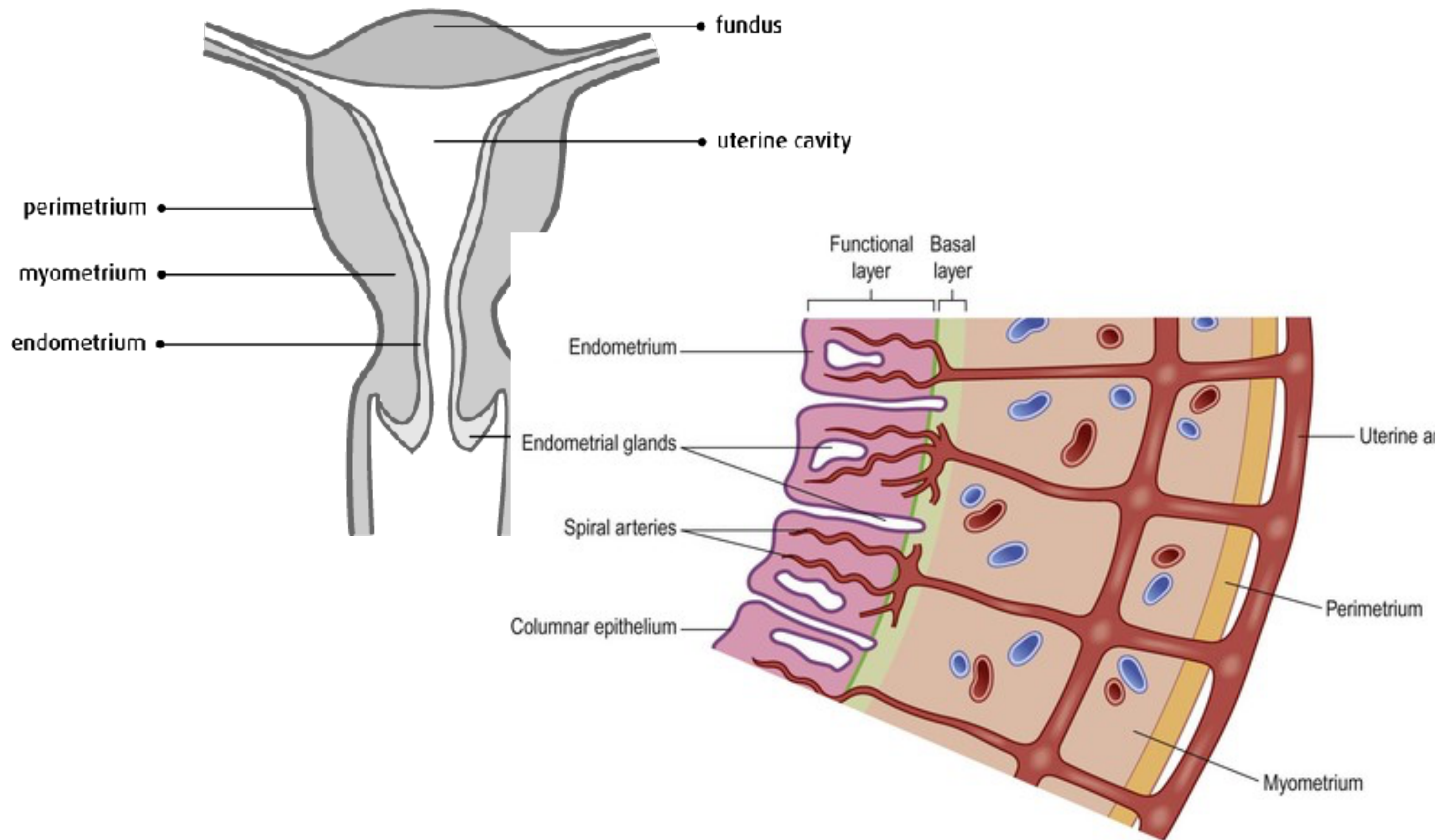


UTERUS

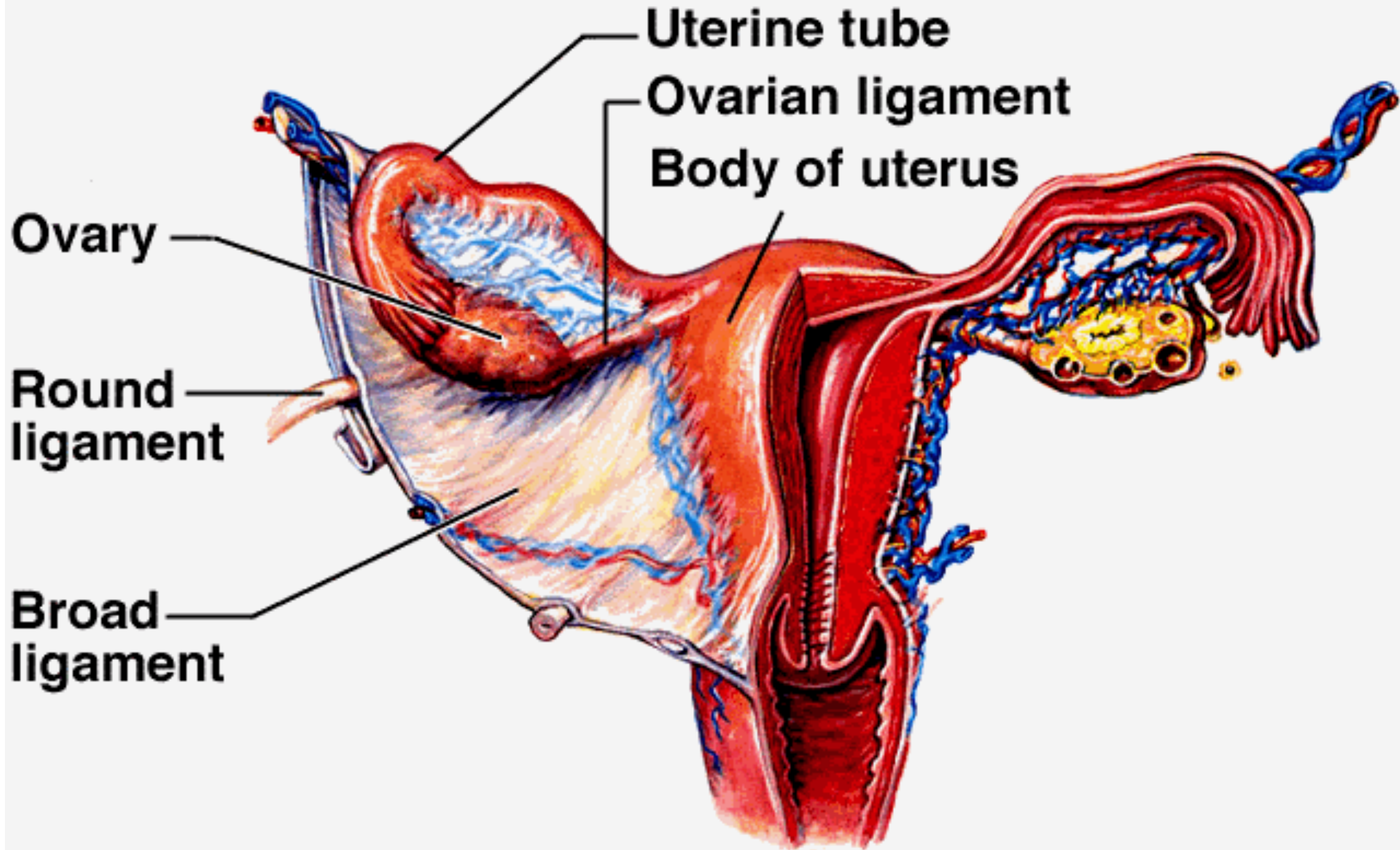


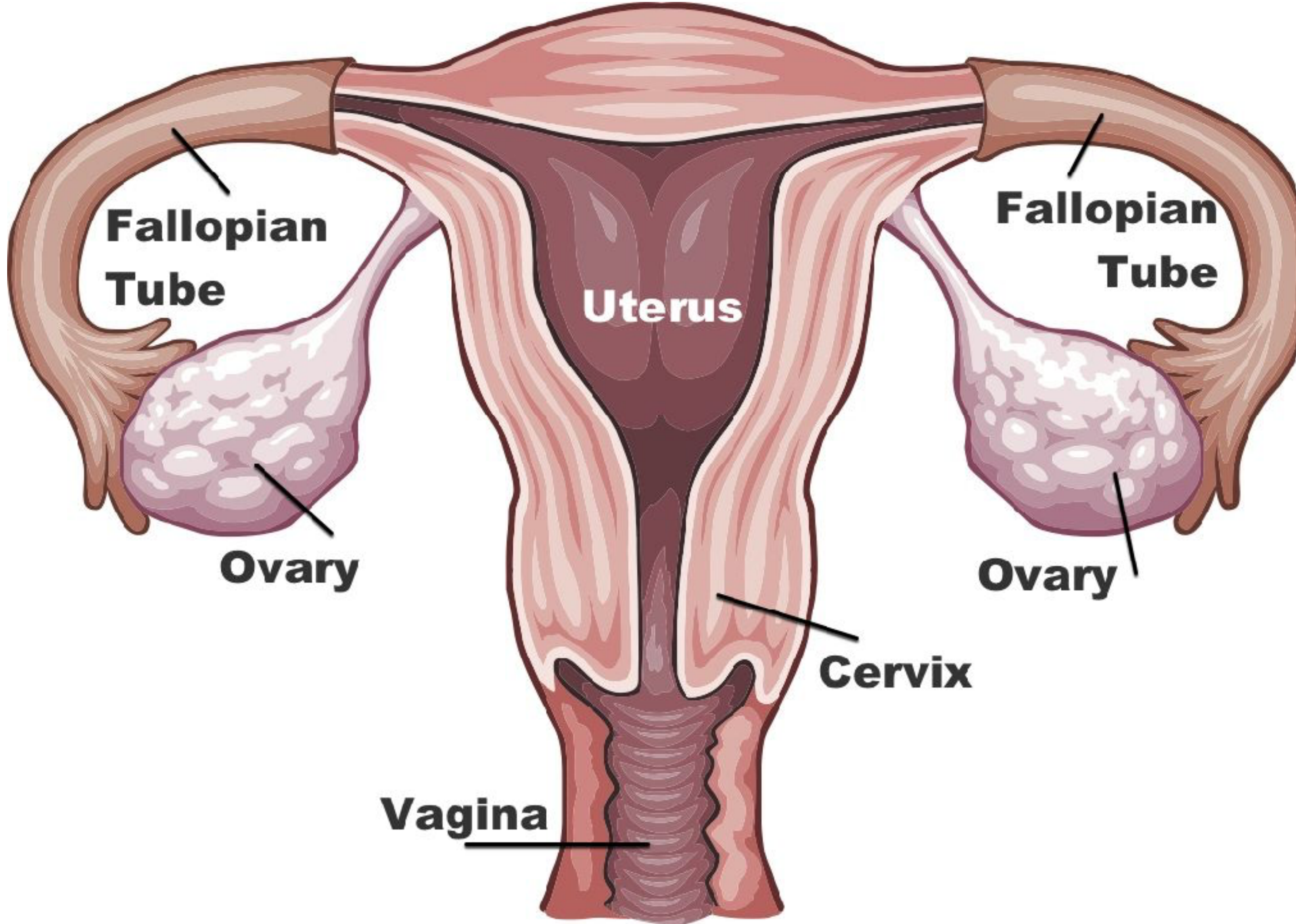


Structure of the Uterus



Female Internal Reproductive Organs (1)





Fallopian Tube

Fallopian Tube

Ovary

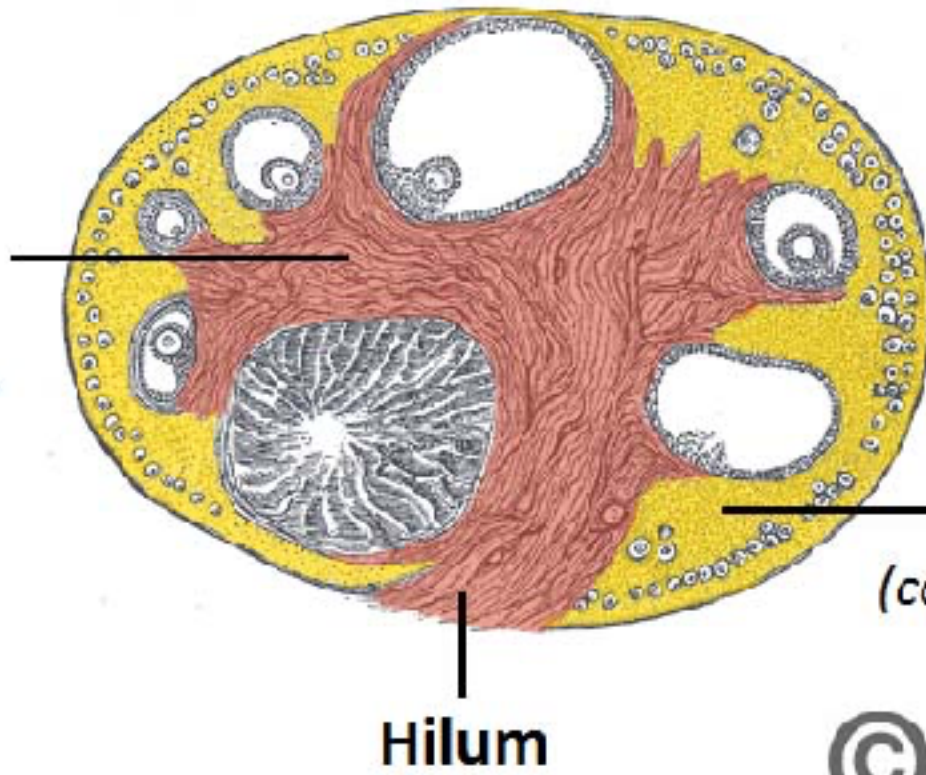
Ovary

Uterus

Cervix

Vagina

Medulla
(contains neurovascular structures)



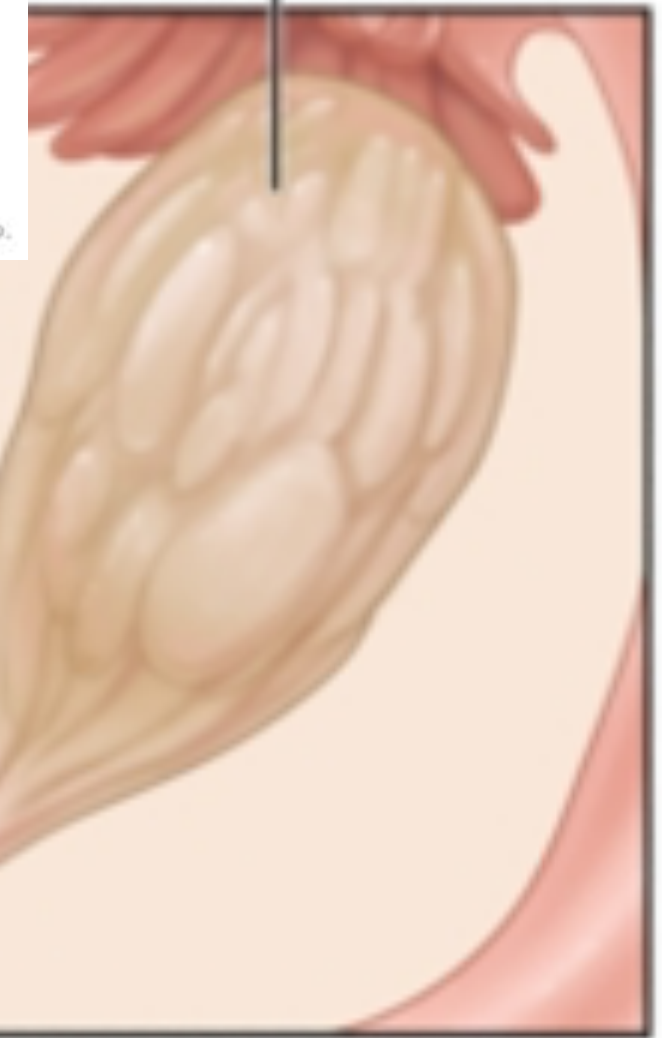
Cuboidal epithelium

Cortex
(contains ovarian follicles)

Hilum

© teachmeanatomy
The #1 Applied Human Anatomy Site on the Web.

Ovary



Uterus

Fallopian tube

