



USN

CBCS

IV Semester B.E Degree Examinations June/July 2019

AUTOMOBILE ENGINEERING (AU)

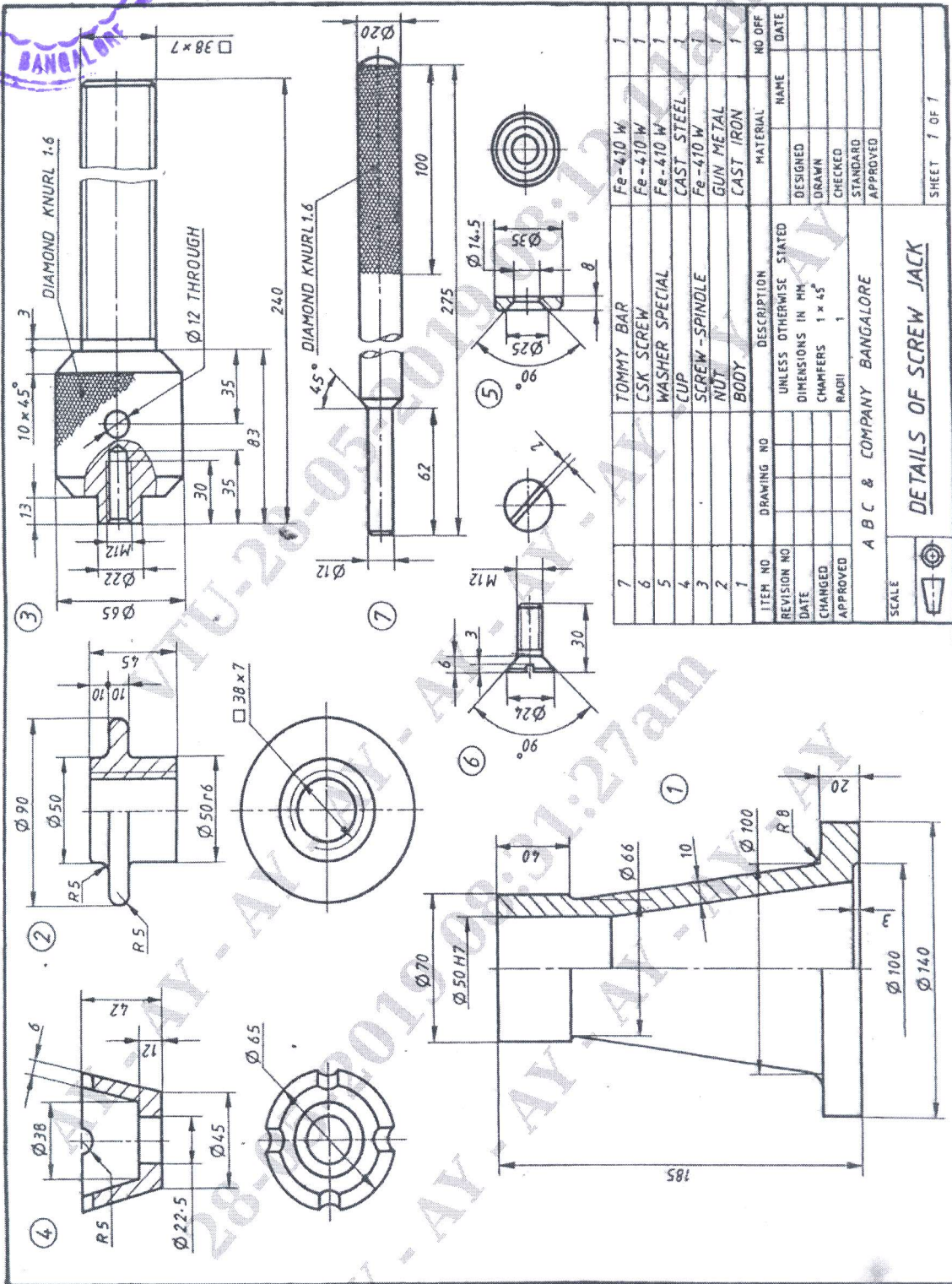
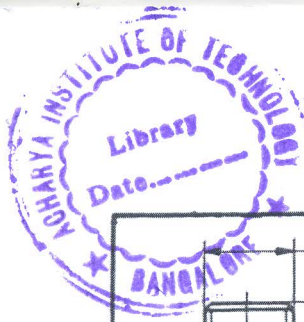
COMPUTER AIDED MACHINE DRAWING

Time: 3 Hours

Max. Marks: 100

- Note:** 1. Answer any ONE question from each of the parts A, Band C.
 2. Use **FIRST ANGLE** projection only.
 3. Missing data if any may suitably Assumed.
 4. All the calculations should be on answer sheet supplied.
 5. All the dimensions are in mm.
 6. **Part C Assembled View should be in 3D and other 2 views in 2D.**

Sl. No.	Question	Marks
Part A		
Q.No.1	A Pentagonal pyramid of 20mm edge of base and 40mm high stands vertically with its base on HP and an edge of the base perpendicular to VP. A section plane perpendicular to HP and inclined 30° to VP cuts the pyramid such that it passes through the pyramid at a shortest distance of 5mm from its axis and in front of it. Draw its sectional front view and project the true shape of the section.	20
Q.No.2	Draw any two views of a Hexagonal Headed bolt, Nut with washer assembly of 25mm diameter, 100mm length and thread length of 50mm. Draw the assembly drawing to actual dimensions and indicate the proportions.	20
Part B		
Q.No.3	Sketch sectional front and top views of the double riveted Zig-Zag butt joint with double straps, taking $t = 10$ mm. Indicate dimensions.	20
Q.No.4	Sketch sectional front and side views of a protected type flange coupling to connect two shafts of diameter 25mm. Indicate dimensions.	20



ITEM NO	DESCRIPTION	MATERIAL	NO OFF
7	TOMMY BAR	Fe-410 W	1
6	CSK SCREW	Fe-410 W	1
5	WASHER SPECIAL	Fe-410 W	1
4	CUP	CAST STEEL	1
3	SCREW-SPINDLE	Fe-410 W	1
2	NUT	GUN METAL	1
1	BODY	CAST IRON	1

REVISION NO	DESCRIPTION	DATE
	UNLESS OTHERWISE STATED	
	DIMENSIONS IN MM	
	CHAMFERS 1 x 45°	
	RADI	

DATE	DESIGNED	NAME	DATE

APPROVED	CHECKED	STANDARD	APPROVED

SCALE	A B C & COMPANY BANGALORE
DETAILS OF SCREW JACK	
SHEET 1 OF 1	

Fig: 1 Details of Screw Jack

Details of a Screw Jack

