

USN

--	--	--	--	--	--	--	--	--	--

10MN36

Third Semester B.E. Degree Examination, December 2017
(MINING ENGINEERING)

COMPUTER AIDED MACHINE DRAWING

Time: 3hrs

Max. Marks: 100

- Note:** 1. Answer any **Two** questions from part **A** and **One** from part **B**.
2. Use **FIRST ANGLE** projection only.
3. Missing data if any may suitably be assumed.
4. All the calculations should be on answer sheet supplied.
5. All the dimensions are in mm.
6. **Part B Assembled View should be in 3D and other 2 views in 2D.**

PART - A

(2X20=40marks)

- Figure 1 shows the pictorial view of an object; Draw the views looking in the directions F, T and L.
- Draw two views of ISO threaded hexagonal bolt 100mm long, 20mm diameter and thread length of 50mm and hexagonal nut assembly in the axis horizontal position. Indicate all the proportions.
- Draw to 1: 1 scale the top and sectional front views of a double riveted butt joint with double cover plates and chain riveting. The thickness of the plates is 14mm. Show at least three rivets in each row. Indicate all the dimensions. Use snap head rivets.
- Draw sectional front view and side view of a Pin type flexible coupling to connect two shafts of diameter 25mm. Indicate all dimensions.

PART - B

(1X60=60 marks)

- Details of a Machine Vice are shown in figure 2. Draw the following views of the assembly : (i) Half Sectional front view and (ii) Top View.
- Details of a Fuel Injector are shown in figure 3. Assemble the parts and draw the following views of the assembly: (i) Sectional front view and (ii) Top View.

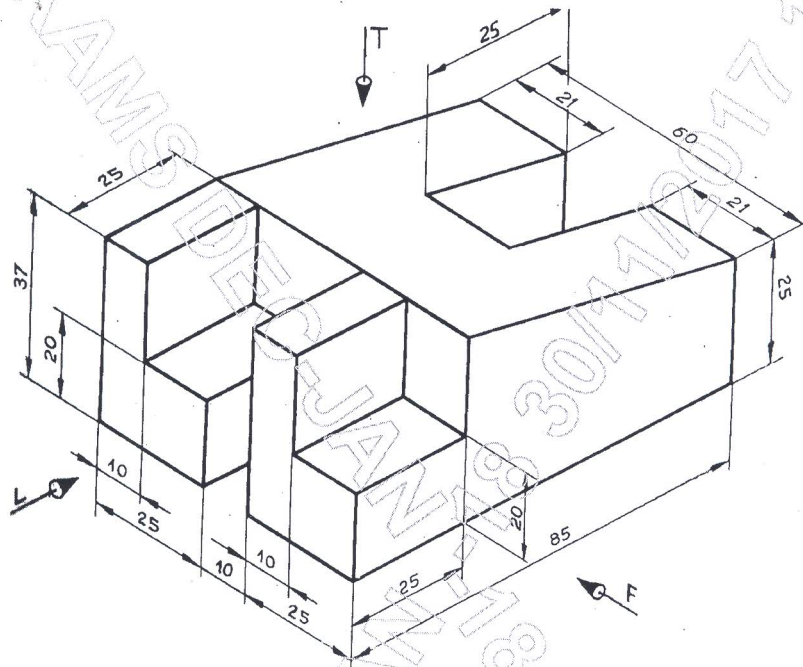


Figure 1

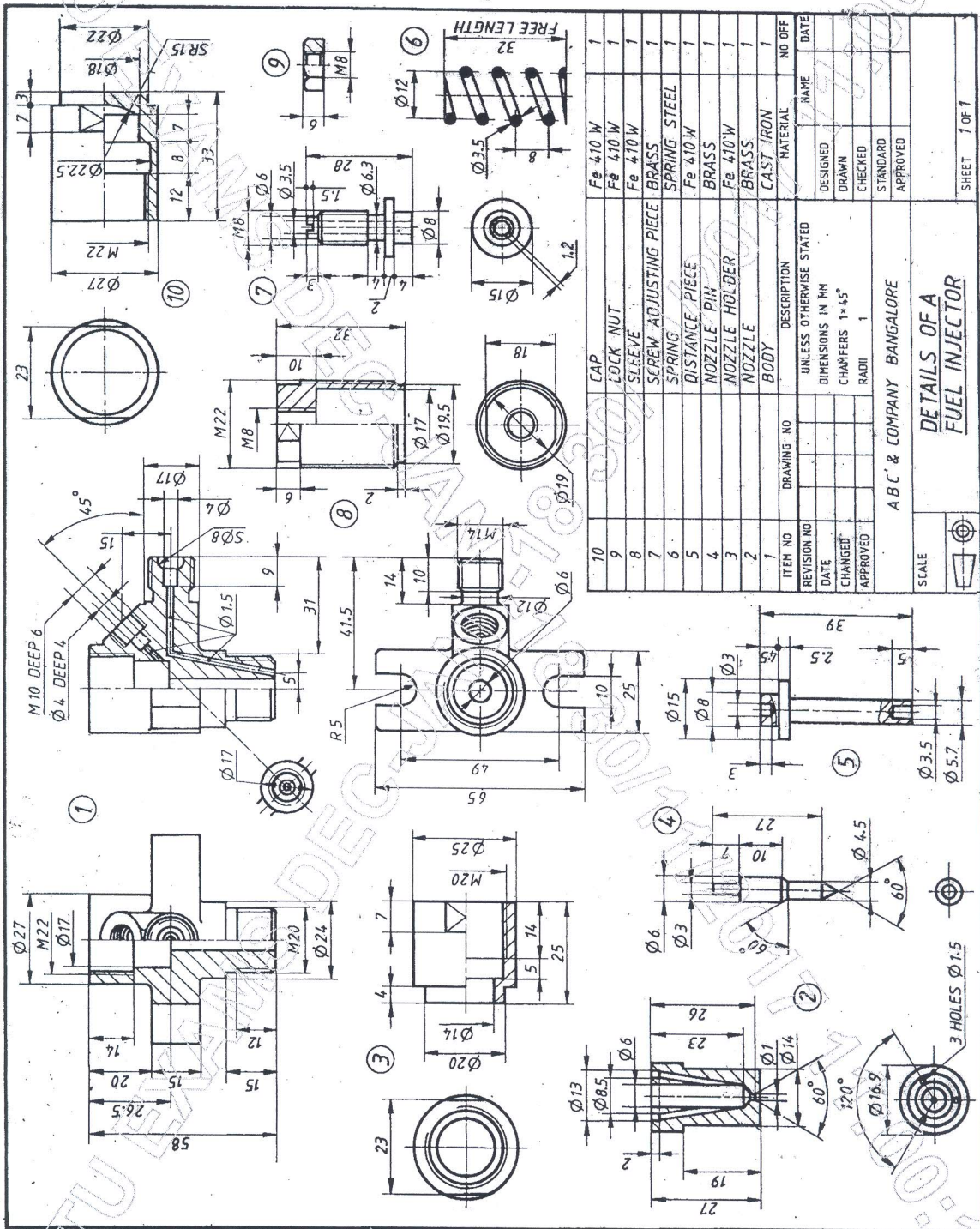


Figure 3