

--	--	--	--	--	--	--	--	--	--

Third/Fourth Semester B.E. Degree Examination, June 2018

(ME/MA)

COMPUTER AIDED MACHINE DRAWING

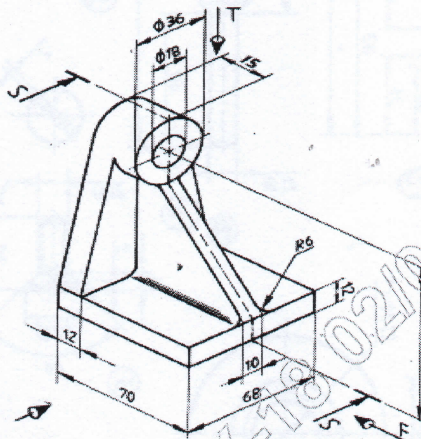
Time: 3 Hours

Max. Marks: 80

- Note:**
1. Answer any ONE question from each of the parts A, B and C.
 2. Use **FIRST ANGLE** projection only.
 3. Missing data if any may suitably be assumed.
 4. All the calculations should be on answer sheet supplied.
 5. All the dimensions are in mm.
 6. **Part C Assembled View** should be in 3D and other 2 views in 2D.

PART - A

- Q.No.1** The pictorial view of a Machine Part is shown below, Draw the following views: i) Front View and ii) Side View and iii) Top view. **(15 Marks)**



- Q.No.2** Draw the following to indicate conventional representation of (a) ISO Metric thread (Unified Thread) having pitch of 50mm. Show at least 03 threads in section. **(15 Marks)**

PART - B

- Q.No.3** Draw to 1: 1 scale the top and sectional front views of a single riveted butt joint with Single cover plate. The thickness of the plates is 9mm. show at least three rivets in each row. Indicate all the dimensions. Use snap head rivets. **(15 Marks)**
- Q.No.4** Draw sectional front view and side view of a Split Muff Coupling to connect two rods of diameter 20mm. Indicate all dimensions. **(15 Marks)**

PART - C

Q.No.5 Figure 1. Shows the details of "SCREW JACK" Assemble the parts and draw the following views:

(a) Front View showing right half in section (b) Top view (50 Marks)

Q.No.6 Figure 2 shows the details of an "I.C.ENGINE CONNECTING ROD". Assemble the parts and draw the following views. Dimension the drawings.

(a) Front View with top half in section. (b)Top View. (50 Marks)

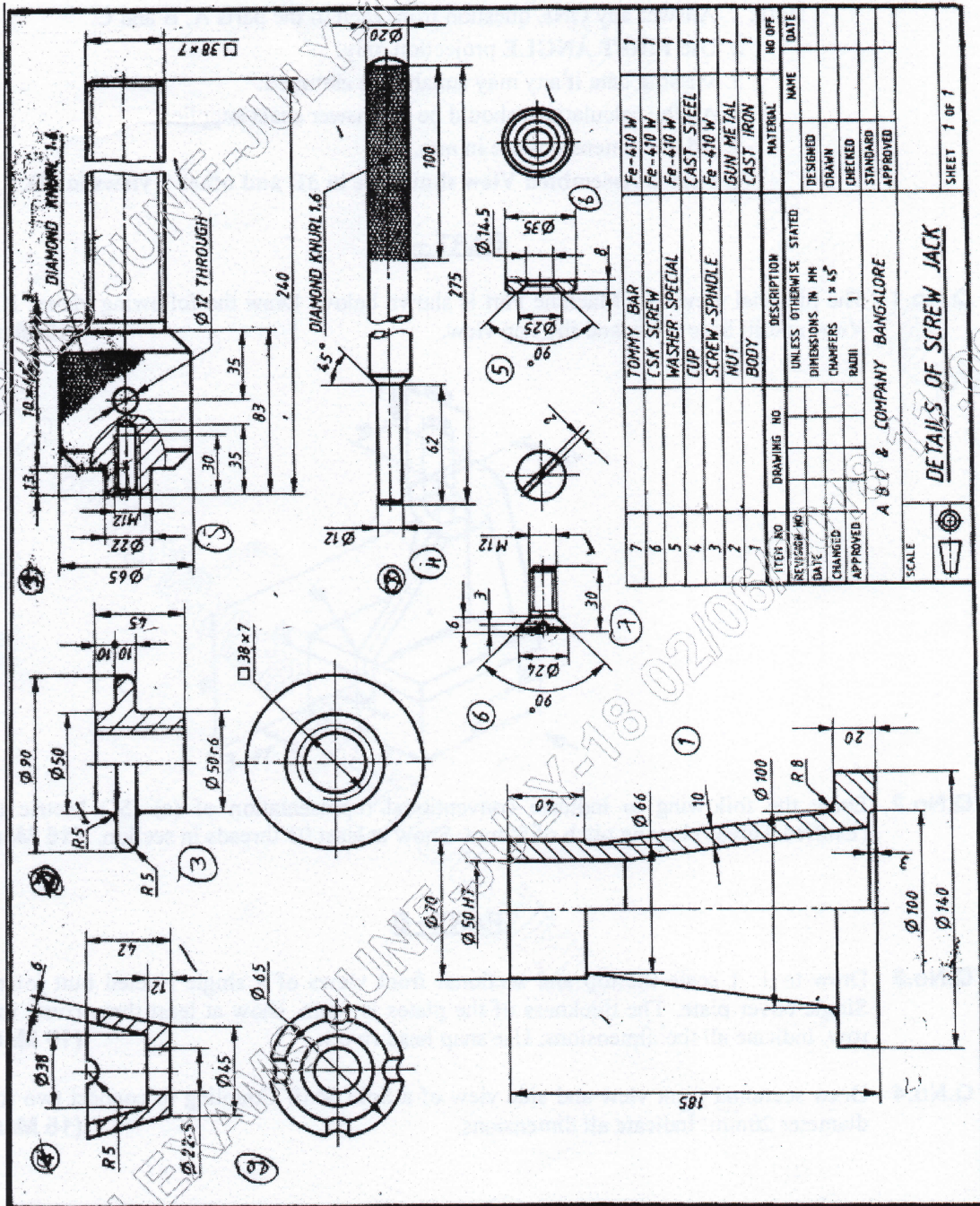


Figure 1. "SCREW JACK"

